

## Amithlon Kernel



### Starter Guide

### Ubuntu 5.10

Documentation by Tom Crews (SnkBitten)

Working with a friend of mine who is much more Linux knowledgeable than myself, he configured an older version of Ubuntu (5.10) to compile the kernel. Following his setup I was able to successfully compile Milan's kernel4 tree and boot Amithlon with it to test. This linux install is much simpler to install and get configured to build the kernel so I thought it would be a good idea to write a guide for it.

**Download Ubuntu 5.10 from the following link:**

<http://old-releases.ubuntu.com/releases/breezy/ubuntu-5.10-dvd-i386.iso>

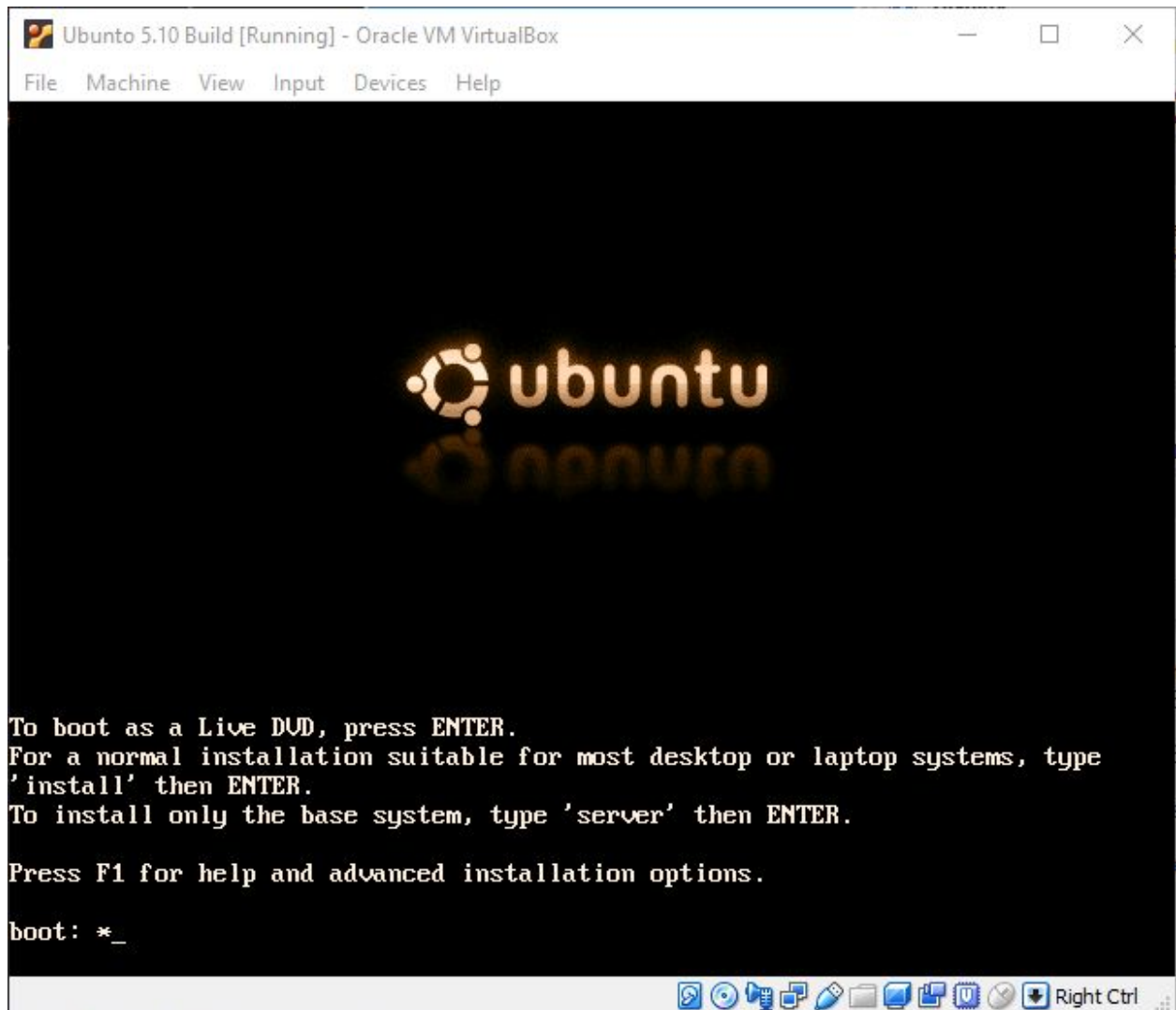
### Launch Virtualbox as Administrator

**Create a Virtualbox system with the following settings as a guideline:**

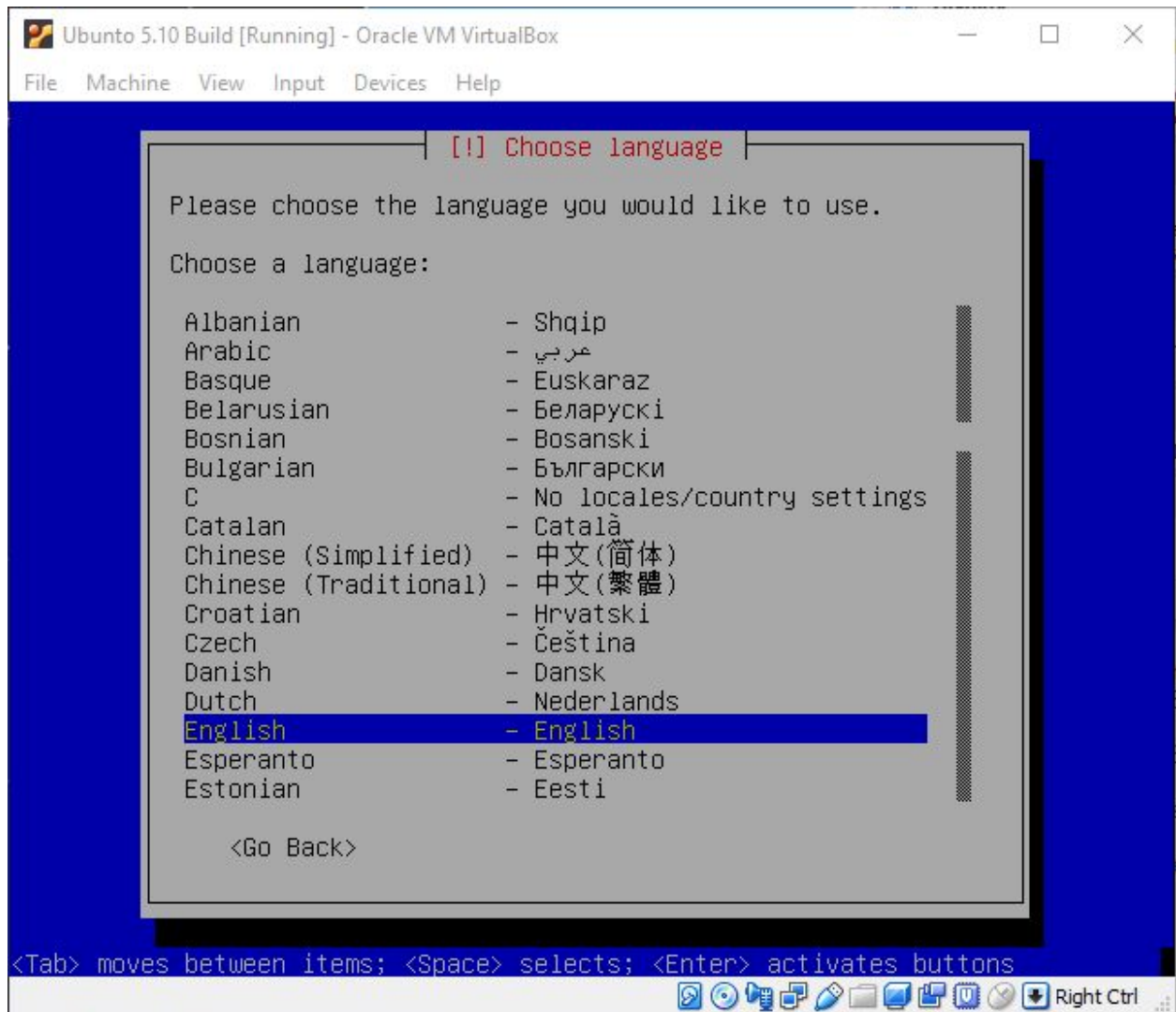
Ubuntu (32-bit), IDE HD and CD, 4 MB of ram, for network I like "Bridged Adapter" and under Advanced I use the Intel PRO/1000 MT Desktop (8254OEM) adapter type. I like this because it puts the virtual Ubuntu system on the same network as my PC allowing me to map to my NAS storage box inside Ubuntu to copy the compiled binaries over easily. Under USB enable and check USB 2.0 (EHCI) Controller. I gave mine a 100 GB VDI that grows as needed to that size. You probably can get away with less.

Insert the ubuntu-5.10-dee-i386.iso into the Virtual's IDE cd drive and start the virtual.

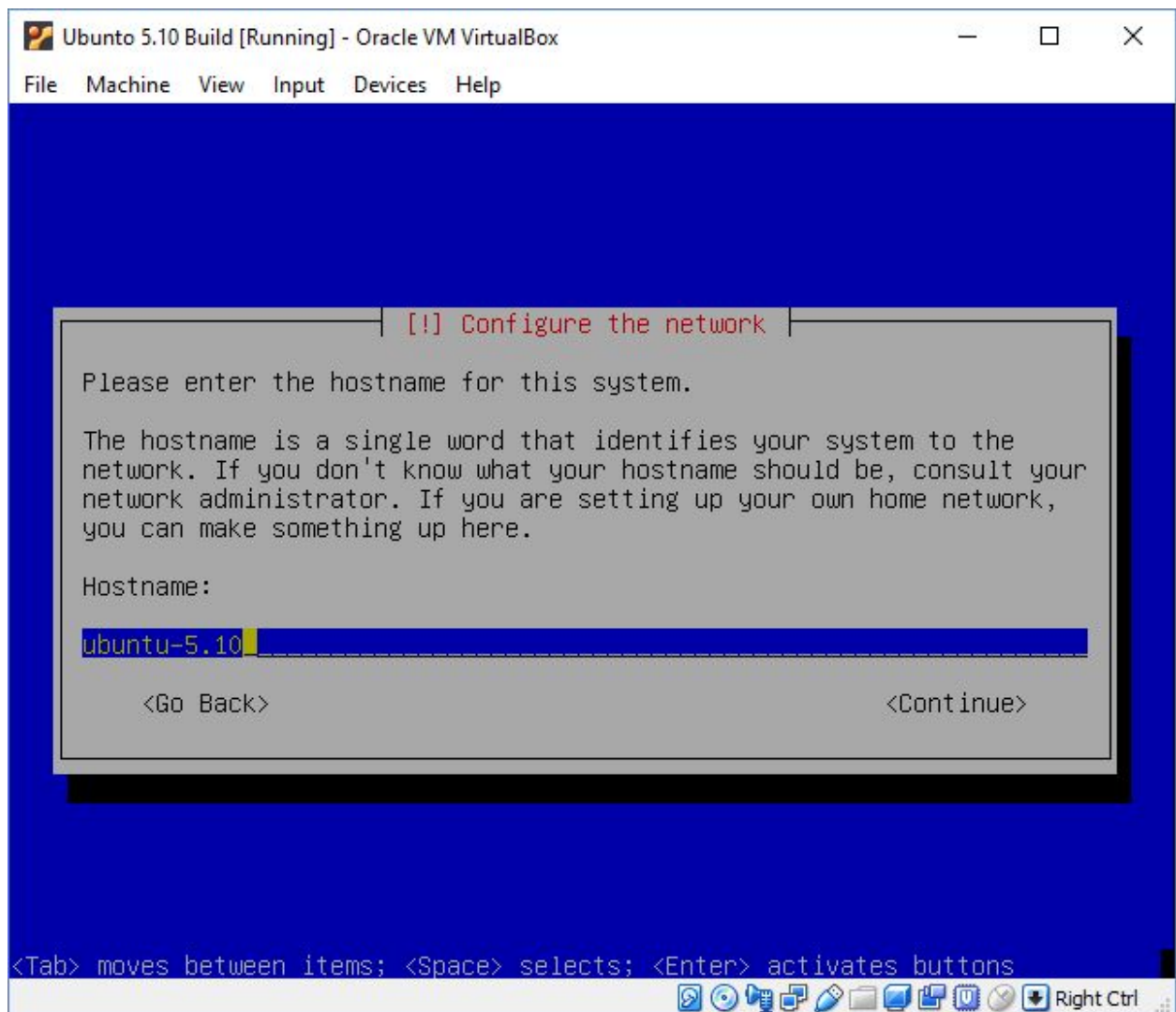
When it boots off the CD type install and press enter



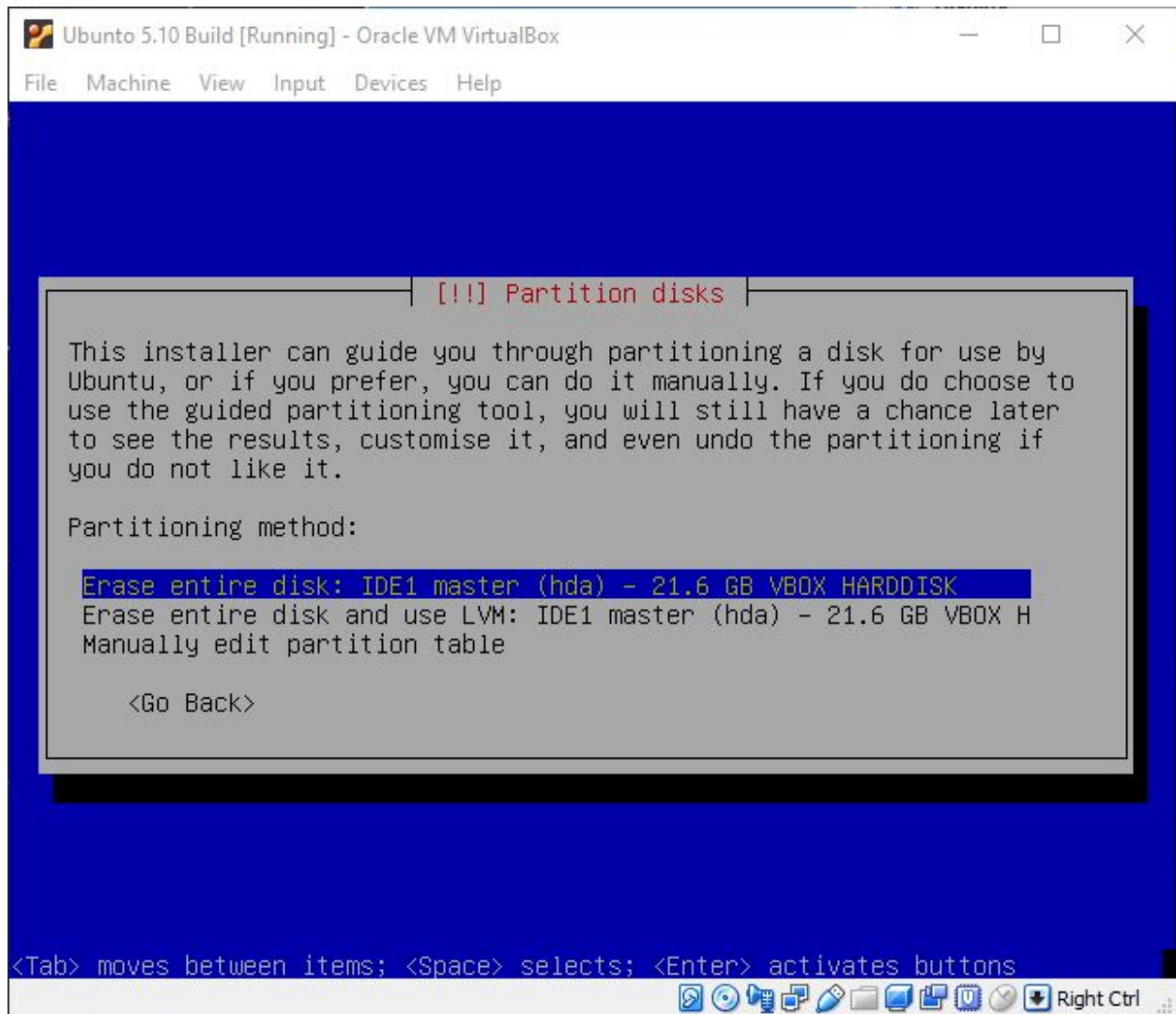
Select your language on the next screen, country and so on and it will start detecting hardware.



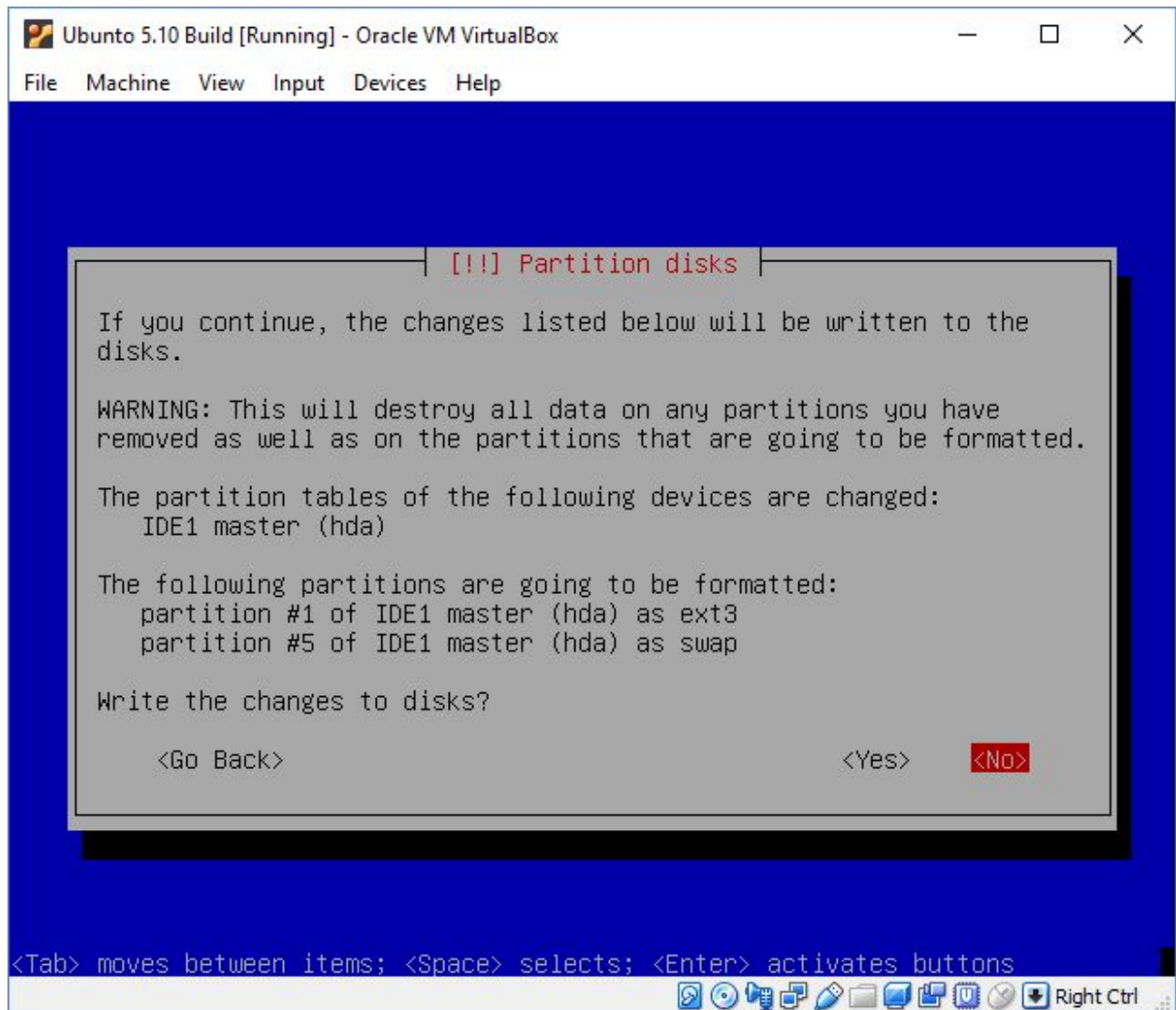
## Name your system



It'll run through another hardware detection and then ask to partition your drive. I just choose the first option.



Select <Yes> to write the changes

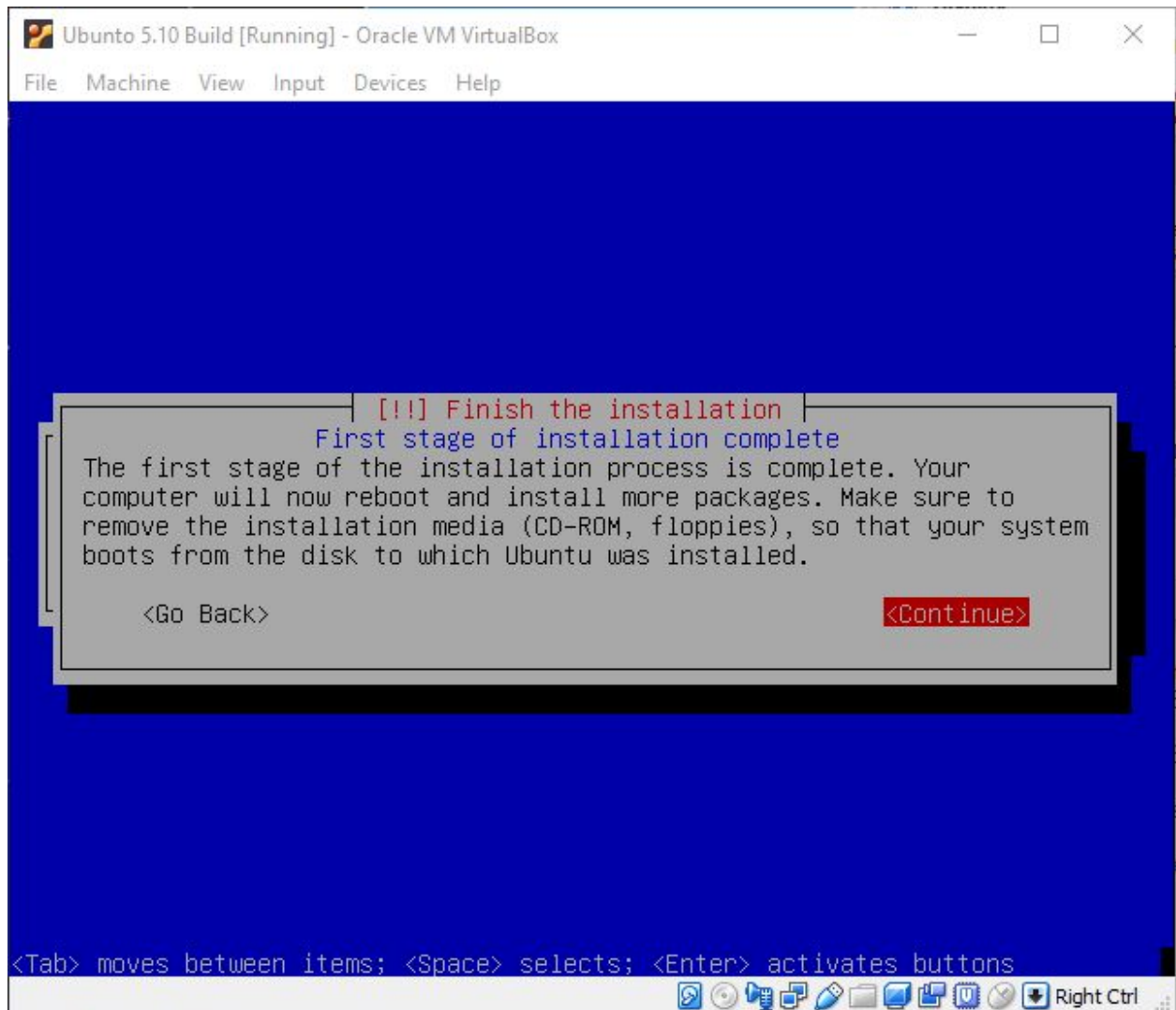


It will begin installing Ubuntu

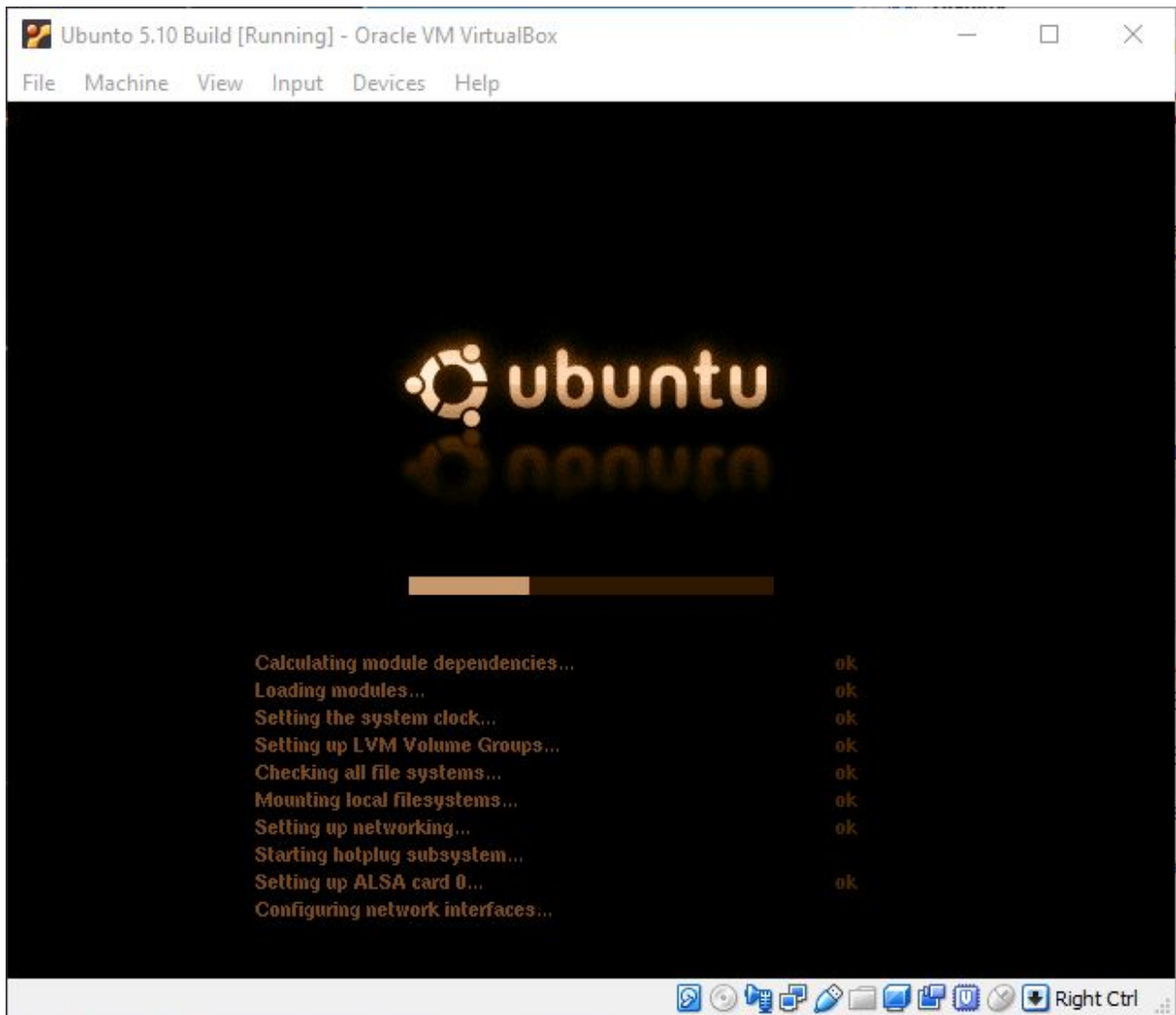
Select your time zone

Enter your name and continue, then it'll ask for a username.

After continuing you'll be prompted to enter a password and then confirm the password. You've now finished the initial installation.

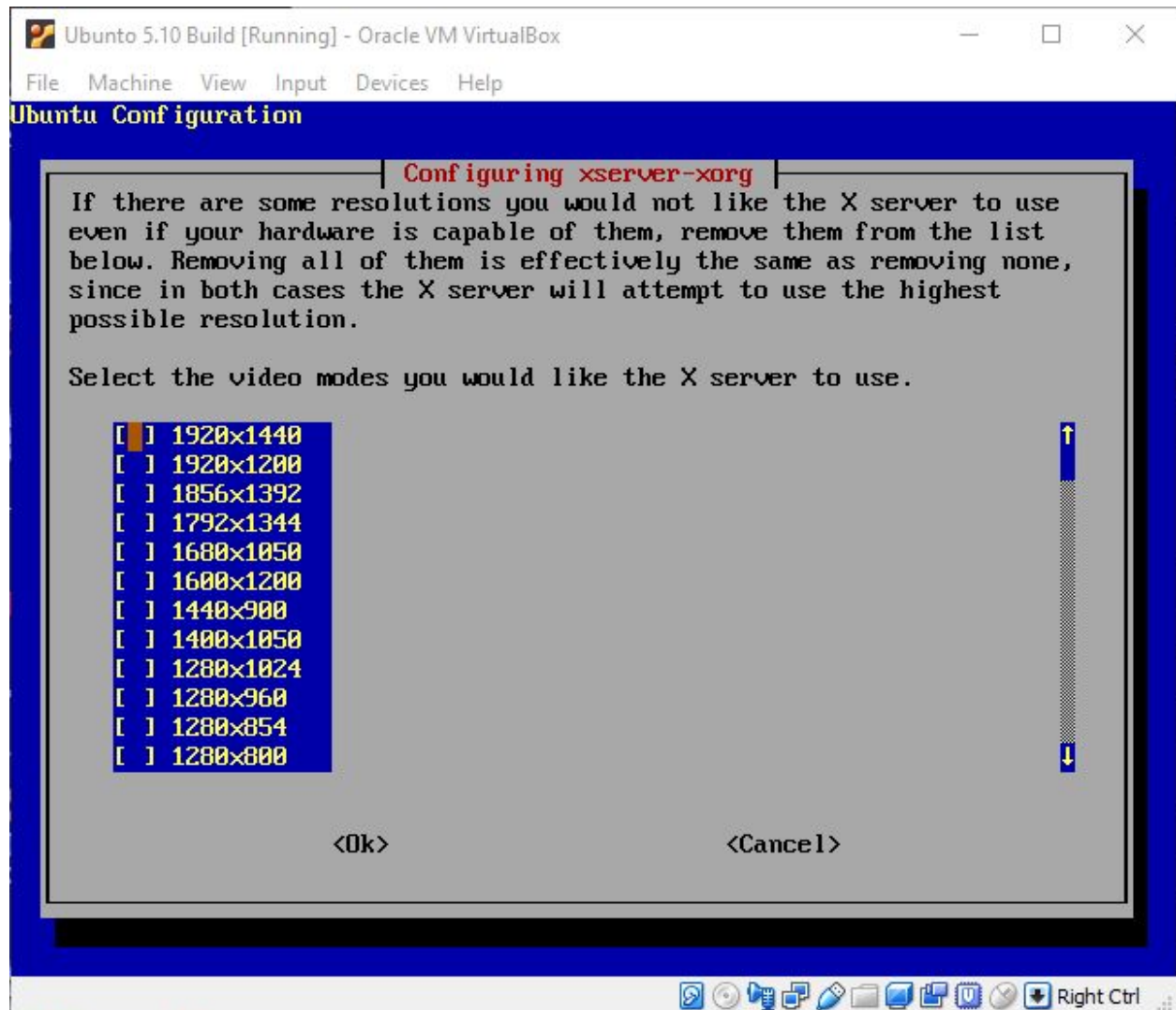


The system will reboot and start Ubuntu.



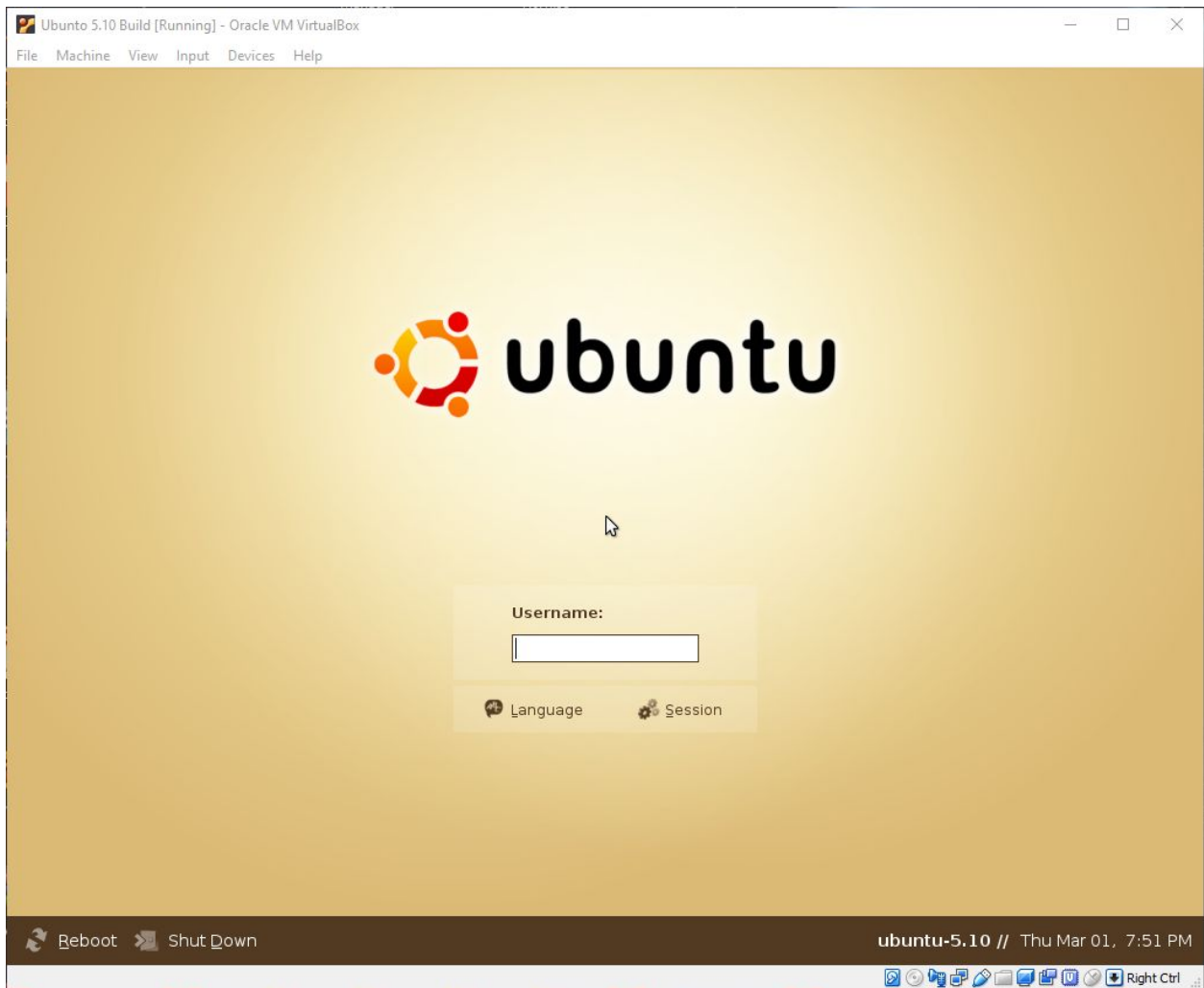


It will go through “Installing packages” as it sets up for the first time, then ask you to select your desired desktop resolution.



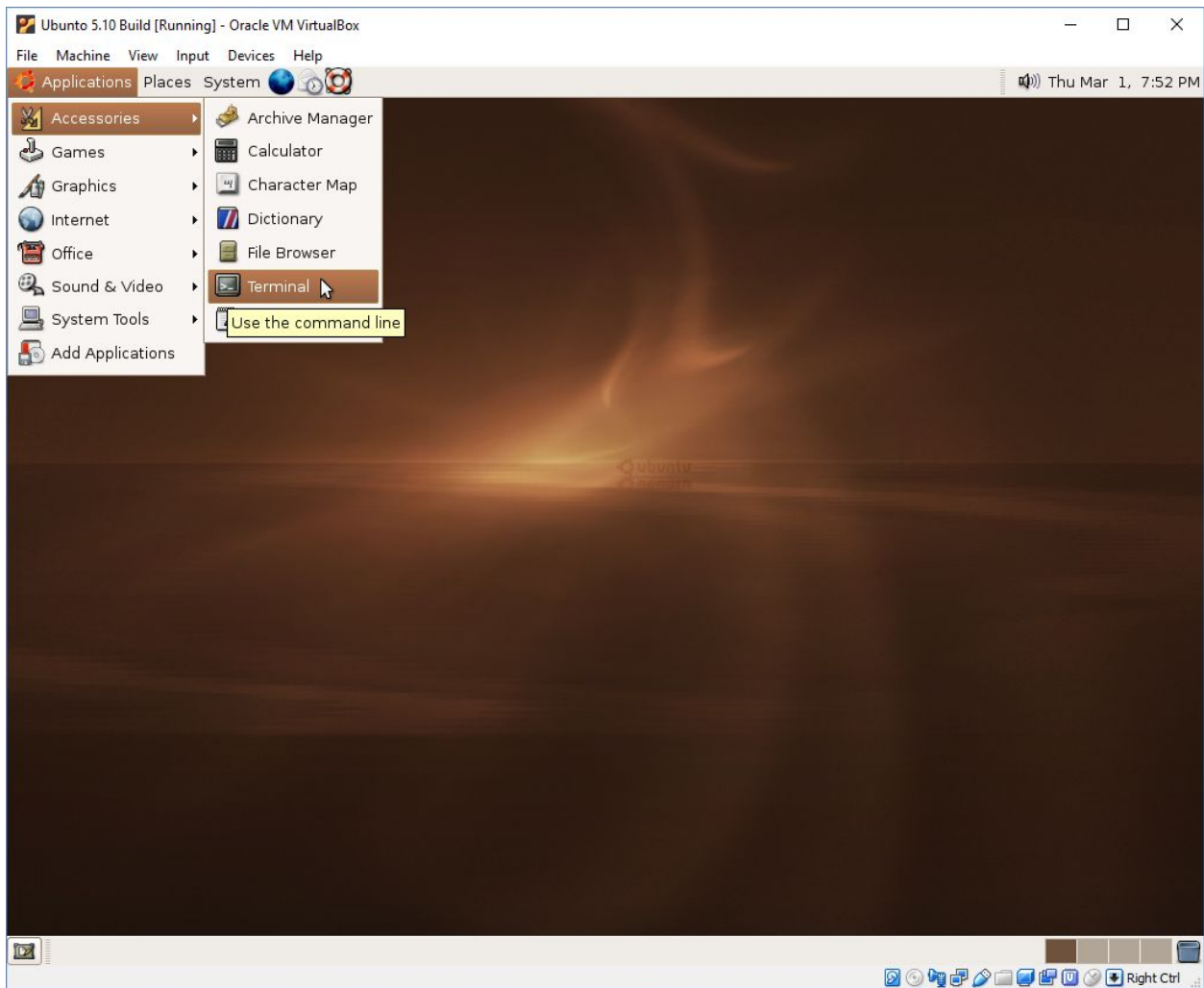
I leave the defaults and press Tab to get to the <OK> and press Enter.

After a few more minutes you'll be at the Ubuntu login screen asking for your Username:



At this point, Insert the ubuntu-5.10-dee-i386.iso into the Virtual's IDE cd drive again.

Once logged in, go to Applications at the top, Accessories, Terminal



Type the command line below

```
sudo apt-get install gcc-3.3 libncurses5-dev linux-headers-2.6.12-9-686 make
```

Enter your password when prompted

Now type

```
sudo ln -s /usr/bin/gcc-3.3 /usr/bin/gcc
```

And enter your password if prompted.

Use the web browser in Ubuntu to download the kernel source from my site

<http://amithlon.snkbitten.com/> Direct link to the kernel is below:

Kernel 4 by Milan Milosavljević

<http://amithlon.snkbitten.com/files/source/Kernel-4/linux-2.4.37.9-amithlon.tar.bz2>

Double click on the linux-2.4.37.9-amithlon.tar.bz2 file to open and extract the files for kernel 4.

In my Home folder I created a folder named Amithlon and extracted there. I now have in my

home folder an amithlon folder and in that a folder named linux-2.4.37.9-amithlon. To compile 4.0 go into the linux-2.4.37.9-amithlon folder using the terminal.

With the terminal open you will change directory to amithlon/linux-2.4.37.9-amithlon. If you've followed with my setup you'd type

***cd amithlon/linux-2.4.37.9-amithlon/***

Now let's make a copy of the .config file that is there that Milan used before we make our compiling environment ready.

Type the commands below:

***cp .config ../***

Then type

***make clean mrproper***

Now we'll copy the config back so we can use it again as the above command would have removed it.

***cp ../.config ./***

Now we'll make it our config file.

***make oldconfig***

Our next step is to setup the dependencies for the kernel so type

***make dep***

When that completes you are ready to run a compile, type

***make bzImage***

The compile will take a few minutes, of course the faster your host machine the faster the compile process.

The kernel is compiled, now it's time to make the modules

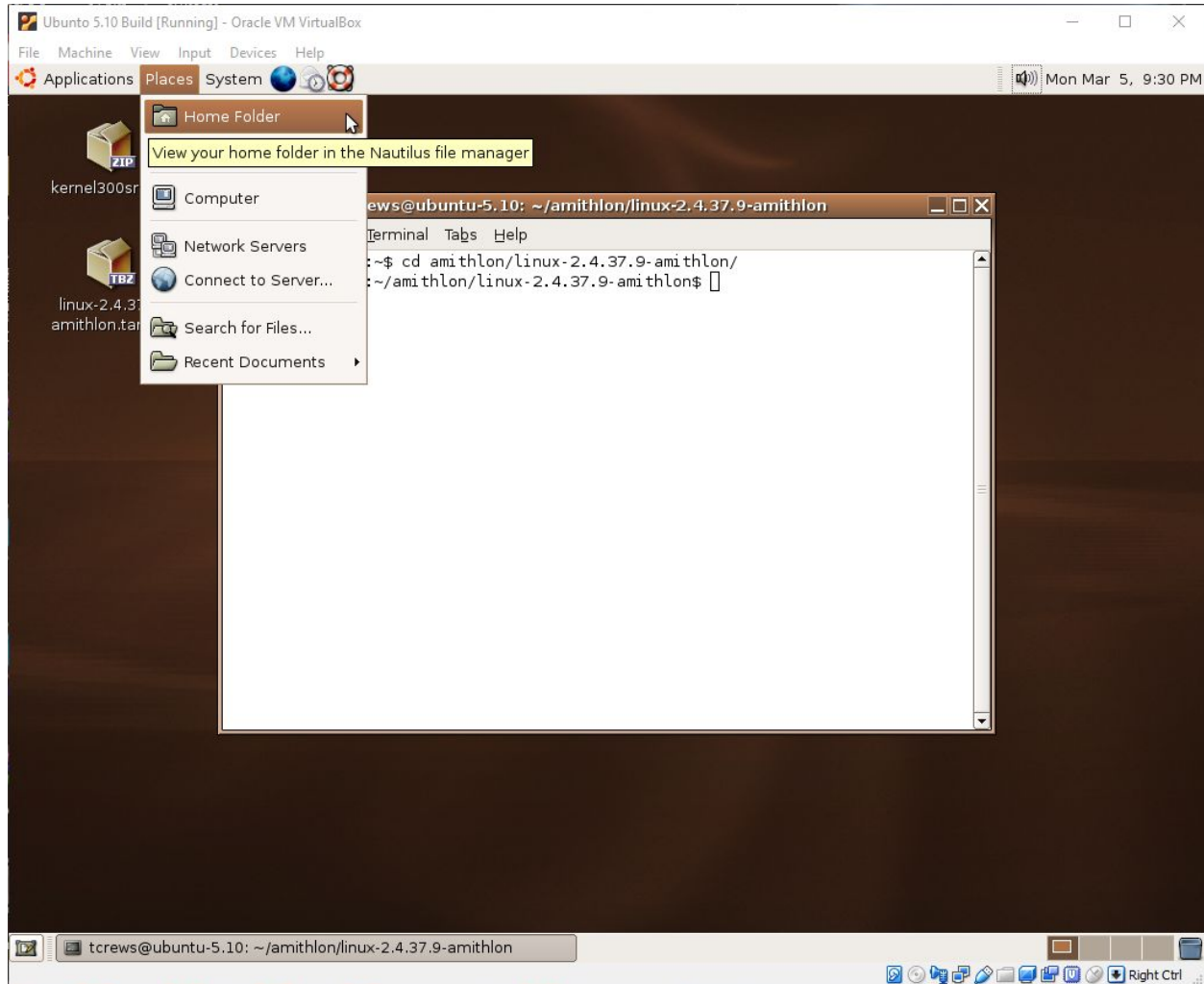
***make modules***

And when that completes

***sudo make modules\_install***

This will ask for your password and compile any modules that had the [m] configured in the .config file.

The kernel will be in arch/i386/boot and of course is named bzImage.  
(Places in the top menu bar)

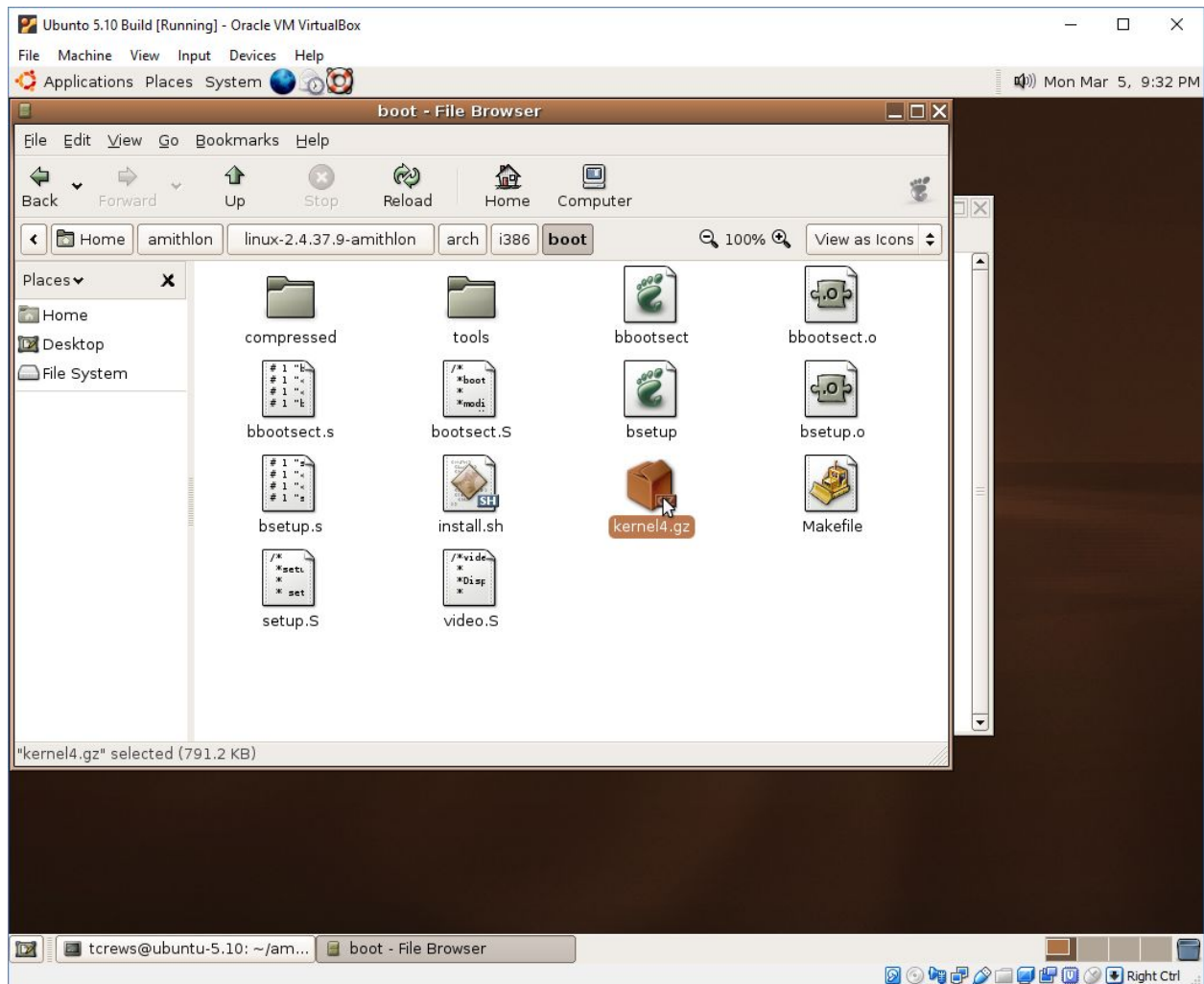


I use the “Places” file explorer and browse to amithlon/linux-2.4.9.37-amithlon/arch/i386/boot, and copy it to a USB thumb drive. If you have an SMB share you could try to set that up so you could just drag the kernel over without have to USB thumb drives.

The modules will be in lib/modules/2.4.37.9/kernel/drivers. They should work with the pci\_modules file from the driver4 archive that originally came with kernel4. I’ve talked with Milan and he had a tool he used to create the text file containing the module information (id and addresses) but does not remember the tool’s name. Using the text file he provided should cover the auto loading of modules with pciinsmod unless there are modules you’ve added to the .config to build that Milan didn’t. The pci\_modules file is copied to Amithlon’s S: folder.

[Drivers4.zip](#) contains Milan’s compiled modules and the pci\_modules text file.

## (Location of compiled kernel)



Congratulations! You have compiled the Amithlon kernel 4 as configured by Milan. You can run "make menuconfig" when you want to make changes to it and <exit> and save changes. You may want to keep Milan's .config file saved so you can copy it back and do a "make oldconfig" again if you make changes that break the kernel.

My recommendation is know your motherboard and cards. I use no modules on my system as the framebuffer (nVidia) is compiled in, my network card (intel e1000) is compiled in and I use AHI Amiga drivers for my SB Live card. If you have supported motherboard audio, figure out which modules it's using and set those to compile in the kernel.

