

AMITHLON-GUIDE

step by step installation

by André "Ratte" Pfeiffer 2006

amirate@gmx.de

BE WARNED! USING THIS GUIDE, YOU WILL LOSE ALL DATAS ON YOUR HDD!

BIOS SETUP UTILITY

Boot

1st Boot Device
2nd Boot Device
3rd Boot Device

[Floppy Drive]
[CDROM]
[Hard Drive]

Specifies the boot
sequence from the
available devices.

↔ Select Screen
↑↓ Select Item
+- Change Option
F1 General Help
F10 Save and Exit
ESC Exit

v02.10 (C)Copyright 1985-2001, American Megatrends, Inc.

First check your BIOS settings, floppy drive and CD-ROM must be bootable.
Please read the mainboard-manual for more details.

For this guide, you need a special tooldisk (based on freedos & freeware).
You also need rawrite to transfer the image to a 1.44mb floppy disk.
<http://www.a1k.org/a1000kick/Updates/freedos.img>
<http://www.a1k.org/a1000kick/Updates/rawrite.exe>

This guide describes an installation on an empty hard drive...

Step 01:

Windows XP Professional Setup

The following list shows the existing partitions and unpartitioned space on this computer.

Use the UP and DOWN ARROW keys to select an item in the list.

- To set up Windows XP on the selected item, press ENTER.
- To create a partition in the unpartitioned space, press C.
- To delete the selected partition, press D.

2048 MB Disk 0 at Id 0 on bus 0 on atapi [MBR]

Unpartitioned space 2047 MB

ENTER=Install C=Create Partition F3=Quit

Start your PC with the WindowsXP-CD. Yes, that is right. Amithlon will follow later on.
(Check your BIOS boot settings, CD-ROM should be enabled)
Delete all your partitions, because you need a clean hard drive.

Step 02:

Windows XP Professional Setup

You asked Setup to create a new partition on
2048 MB Disk 0 at Id 0 on bus 0 on atapi [MBR].

- To create the new partition, enter a size below and press ENTER.
- To go back to the previous screen without creating the partition, press ESC.

The minimum size for the new partition is 4 megabytes (MB).

The maximum size for the new partition is 2044 megabytes (MB).

Create partition of size (in MB): 1500

ENTER=Create ESC=Cancel

Create a partition for WindowsXP (press C).
WindowsXP needs a minimum of 1500 megabytes, it is up to you how much space you will leave for Amithlon.

Step 03:

Windows XP Professional Setup

The following list shows the existing partitions and unpartitioned space on this computer.

Use the UP and DOWN ARROW keys to select an item in the list.

- To set up Windows XP on the selected item, press ENTER.
- To create a partition in the unpartitioned space, press C.
- To delete the selected partition, press D.

2048 MB Disk 0 at Id 0 on bus 0 on atapi [MBR]

C:	Partition1 [New <Raw>]	1500 MB < 1500 MB free>
	Unpartitioned space	547 MB

ENTER=Install D=Delete Partition F3=Quit

Press ENTER to install WindowsXP on your new partition.

Step 04:

Windows XP Professional Setup

The partition you selected is not formatted. Setup will now format the partition.

Use the UP and DOWN ARROW keys to select the file system you want, and then press ENTER.

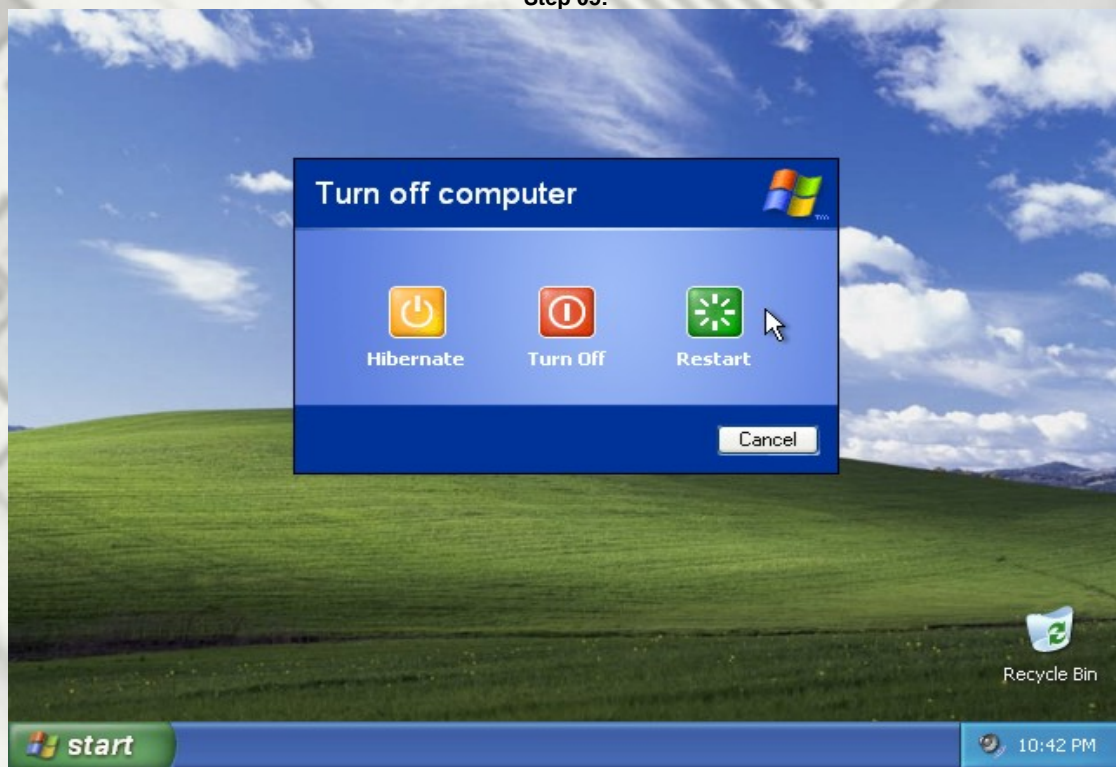
If you want to select a different partition for Windows XP, press ESC.

Format the partition using the NTFS file system <Quick>
Format the partition using the FAT file system <Quick>
Format the partition using the NTFS file system
Format the partition using the FAT file system

ENTER=Continue ESC=Cancel

Select "format with NTFS" for the new partition.

Step 05:



Install your WindowsXP ... nothing special here.
If you have finished your WindowsXP-setup, select RESTART.
Remove the WindowsXP-CD and insert the DOSToolDisk.

Step 06:

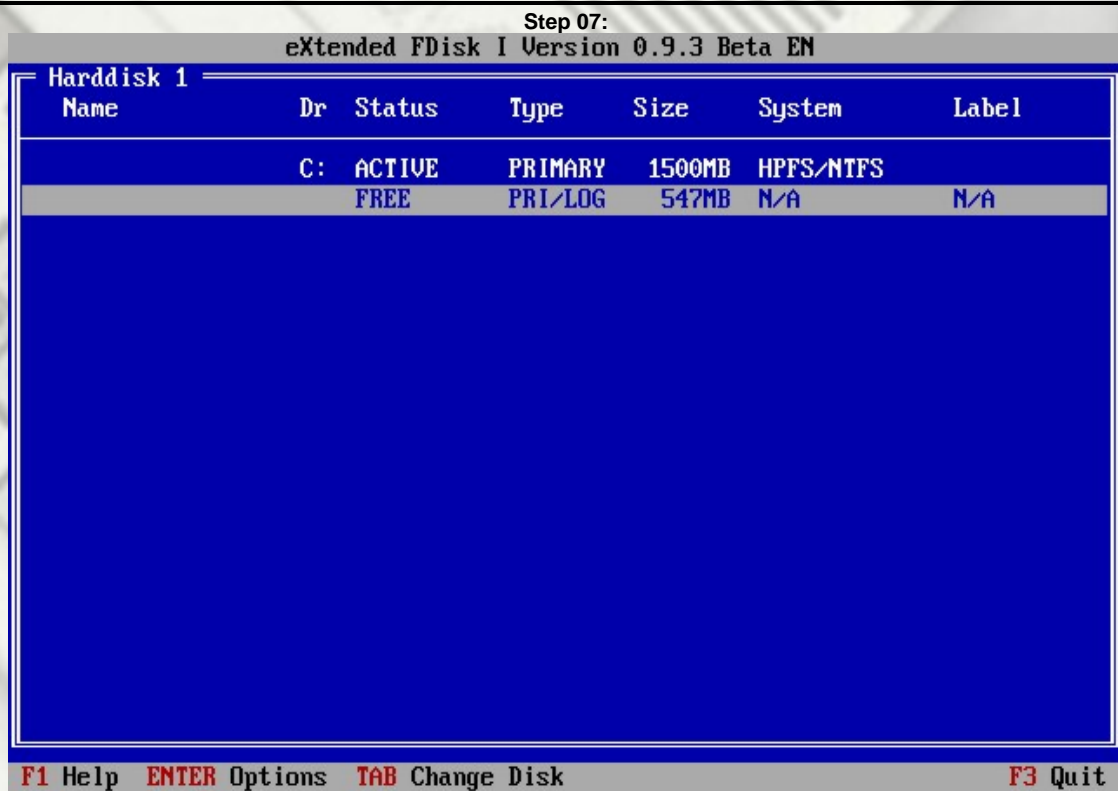
```
Starting FreeDOS ...

A:\>dir
Volume in drive A has no label
Volume Serial Number is
Directory of A:\

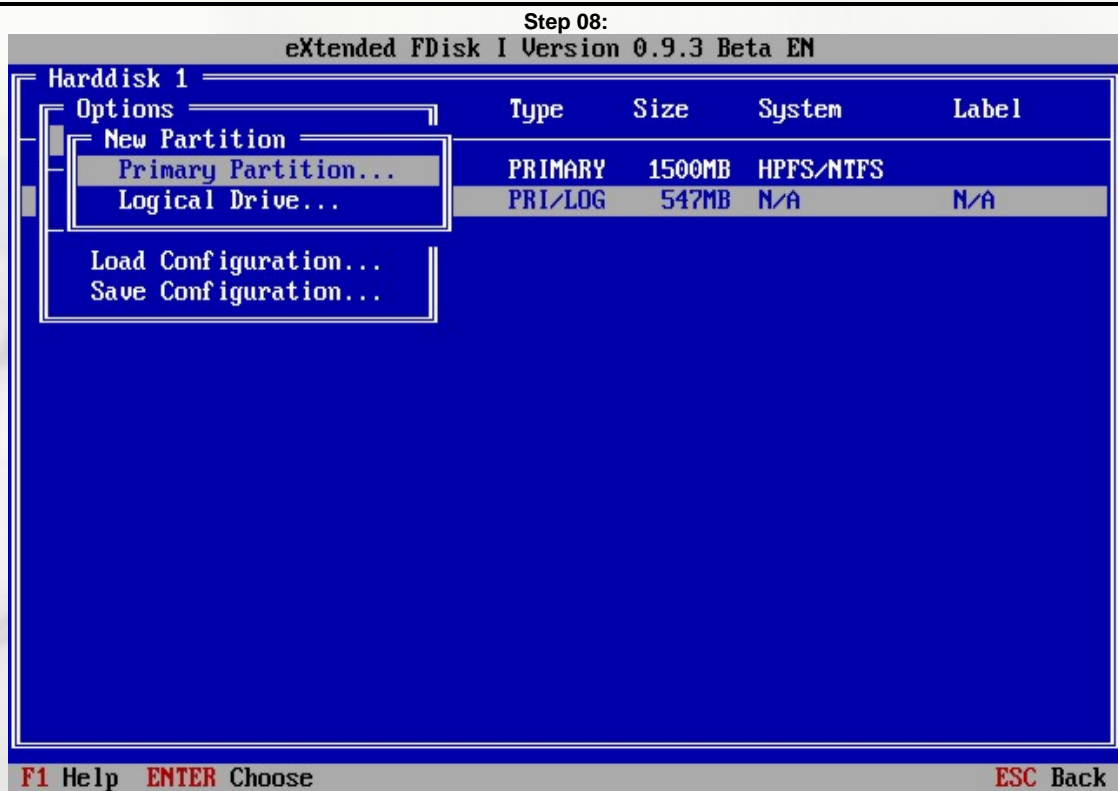
KERNEL  SYS      44,730  11-30-05  7:43p
COMMAND COM     66,357  11-15-05  3:30p
FORMAT  EXE     30,921  05-25-05  1:55a
SYS      COM     11,458  06-07-05  12:12a
EDIT     EXE    183,144  03-23-00  11:54a
EDIT     HLP     25,127  03-23-00  11:55a
EDIT     LSM       466  03-23-00  11:51a
LOADLIN  EXE     32,225  04-16-02  1:49a
XFDISK   EXE     86,413  09-09-01  10:06p
XFDISK   INI       203  10-27-00  12:33p
AUTOEXEC BAT       53  02-13-06  9:02p
          11 file(s)      481,097 bytes
          0 dir(s)       973,824 bytes free

A:\>xfdisk
```

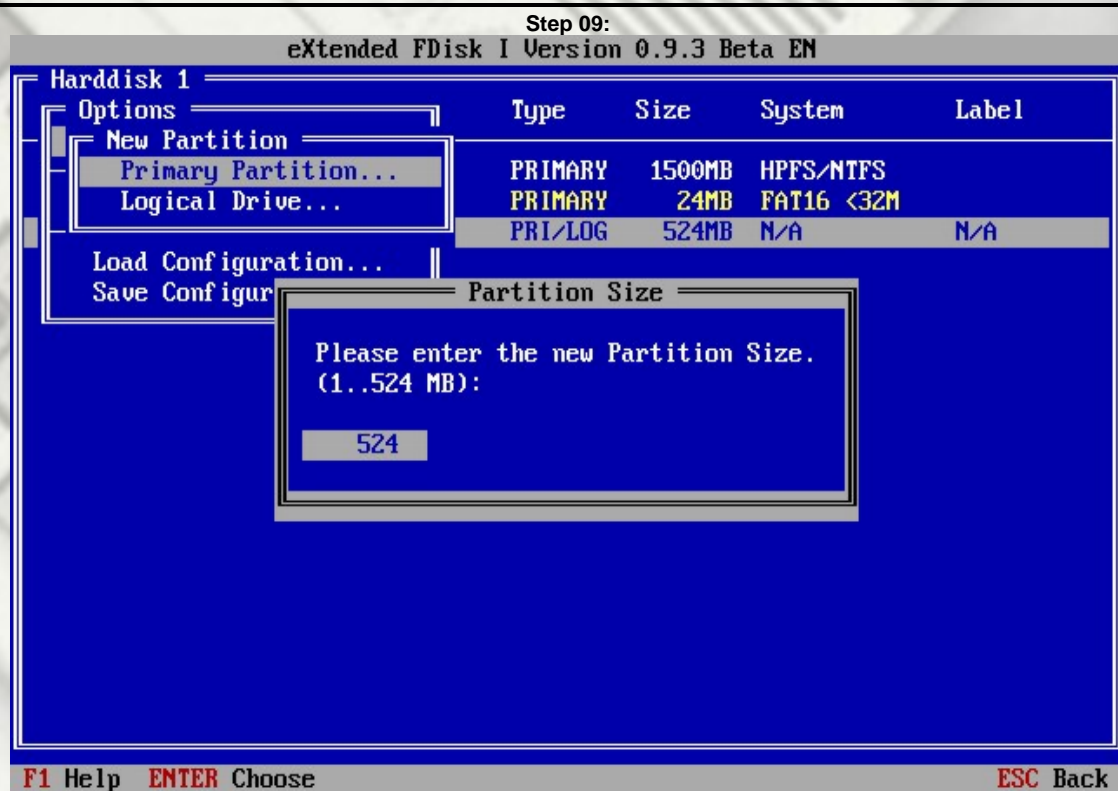
After booting from the DOSToolDisk your screen should look like this...
...now execute XFDISK.



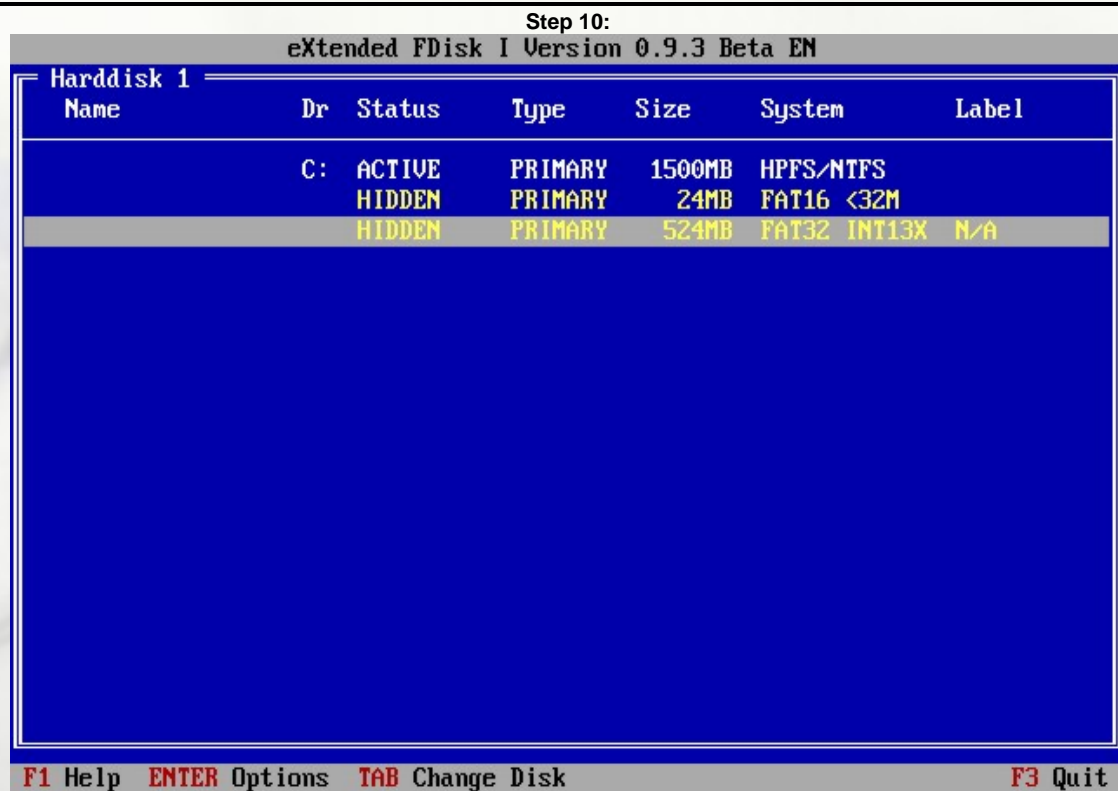
The screen should look similar to this one ... depends on the physical size of your hard drive.
Now select the FREE area for the next operations.



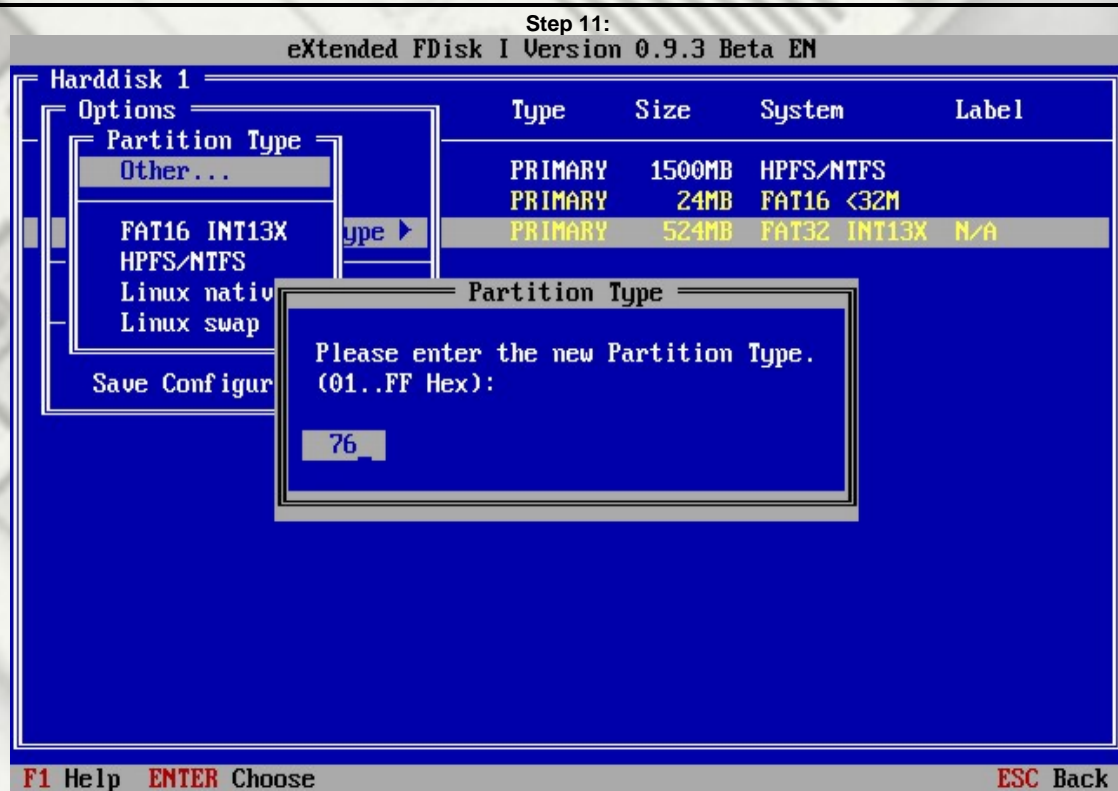
Create a new primary partition for the Amithlon kernel.
Minimum size should be 2-3 megabytes, if you want to try different kernels, you should need more space.
24 megabytes are enough ...



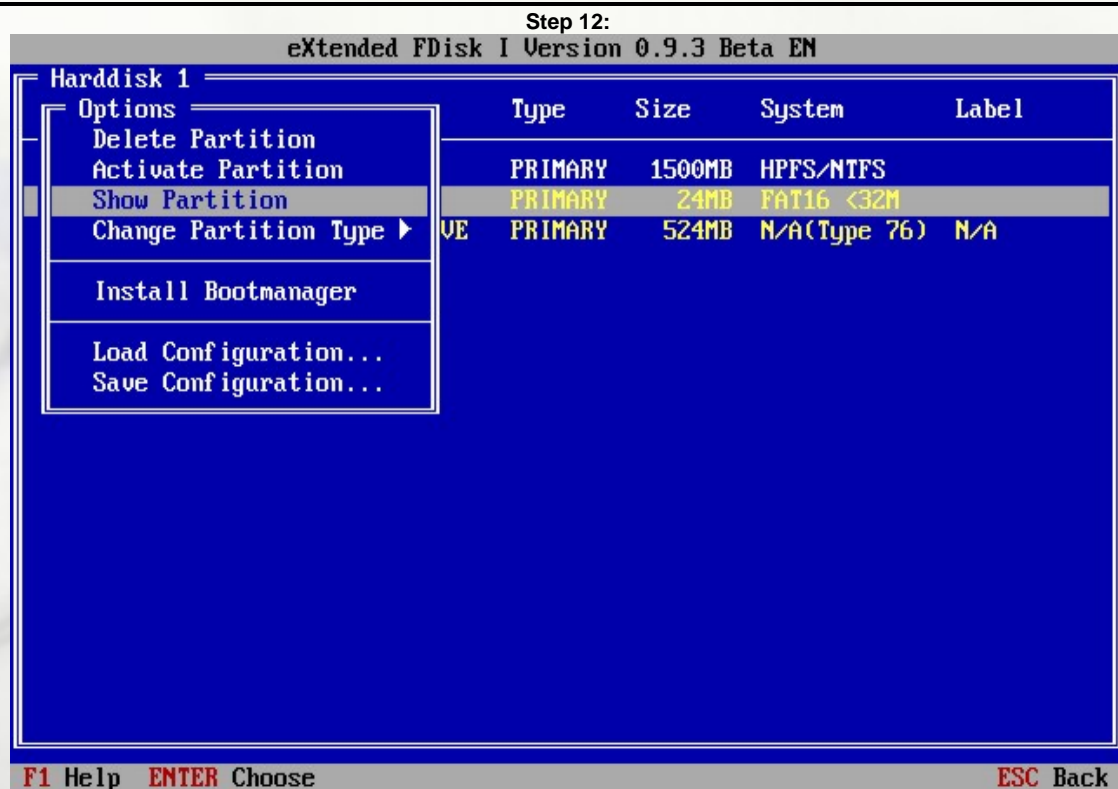
Now we create the next primary partition.
This time it is for the AmigaOS, also known as virtual HD, because inside AmigaOS
this partition will be handled as a separate hard drive.



The screen should look similar to this one ... depends on the physical size of your hard drive.



Now you should change the partition type for the AmigaOS to 76.
Amithlon needs this partition type for the virtual Amiga hard drive.



For the next step you should select the Amithlon kernel partition.
Select the option SHOW PARTITION.

Step 13:
eXtended FDisk I Version 0.9.3 Beta EN

Harddisk 1						
Name	Dr	Status	Type	Size	System	Label
		HIDDEN	PRIMARY	1500MB	HPFS/NTFS	
C:		ACTIVE	PRIMARY	24MB	FAT16 <32M	
		INACTIVE	PRIMARY	524MB	N/A(Type 76)	N/A

F1 Help ENTER Options TAB Change Disk F3 Quit

The Amithlon kernel partition is now activated and should be mounted as drive C:.
All partitions are ready.

Step 14:
eXtended FDisk I Version 0.9.3 Beta EN

Harddisk 1						
Options		Type	Size	System	Label	
Delete Partition		PRIMARY	1500MB	HPFS/NTFS		
Hide Partition		PRIMARY	24MB	FAT16 <32M		
Change Partition Type ▶		PRIMARY	524MB	N/A(Type 76)	N/A	
Install Bootmanager						
Load Configuration...						
Save Configuration...						

F1 Help ENTER Choose ESC Back

Now you install the boot manager.

Step 15:
eXtended FDisk I Version 0.9.3 Beta EN

Harddisk 1

Options	Type	Size	System	Label
Set Startup Options				
Remember Choice	MARY	1500MB	HPFS/NTFS	
Time Limit for Boot Menu...	MARY	24MB	FAT16 <32M	
Time Limit Behaviour	MARY	524MB	N/A(Type 76)	N/A

Time Limit

Please enter the time in seconds to wait for your choice in the Boot Menu on startup.
(0 = no time limit, 1..300 seconds):

5

F1 Help ENTER Choose ESC Back

Change the settings like this:
Clear Screen
Simple Menu
-> Time Limit 5 seconds

Step 16:
eXtended FDisk I Version 0.9.3 Beta EN

Harddisk 1

Options	Type	Size	System	Label
Delete Partition	PRIMARY	1500MB	HPFS/NTFS	
Hide Partition	PRIMARY	24MB	FAT16 <32M	
Change Partition Type	E PRIMARY	524MB	N/A(Type 76)	N/A

New Boot Menu Entry...

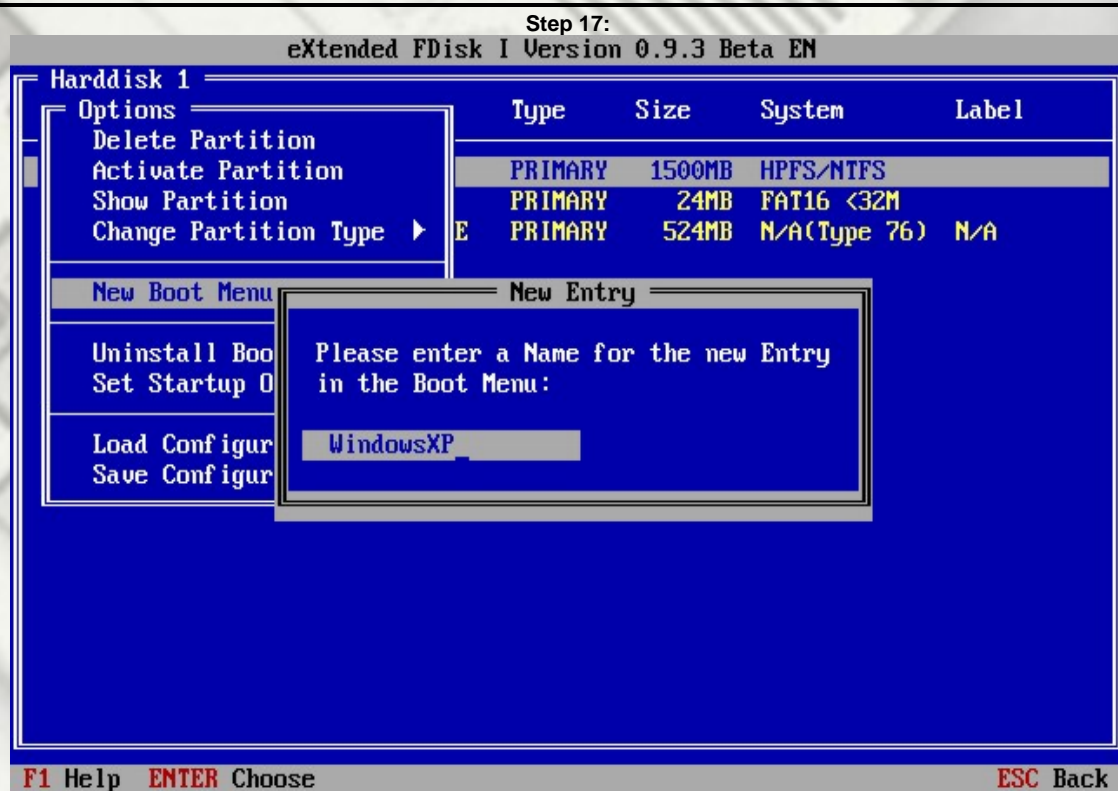
New Entry

Please enter a Name for the new Entry in the Boot Menu:

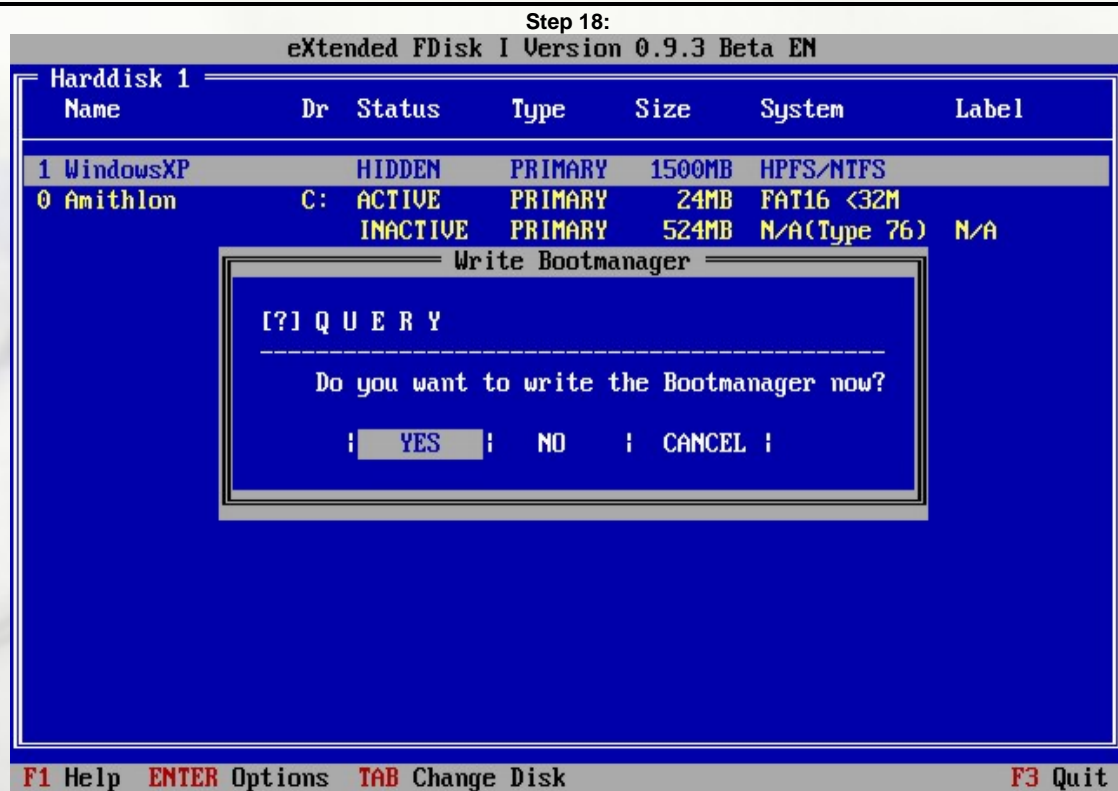
Amithlon

F1 Help ENTER Choose ESC Back

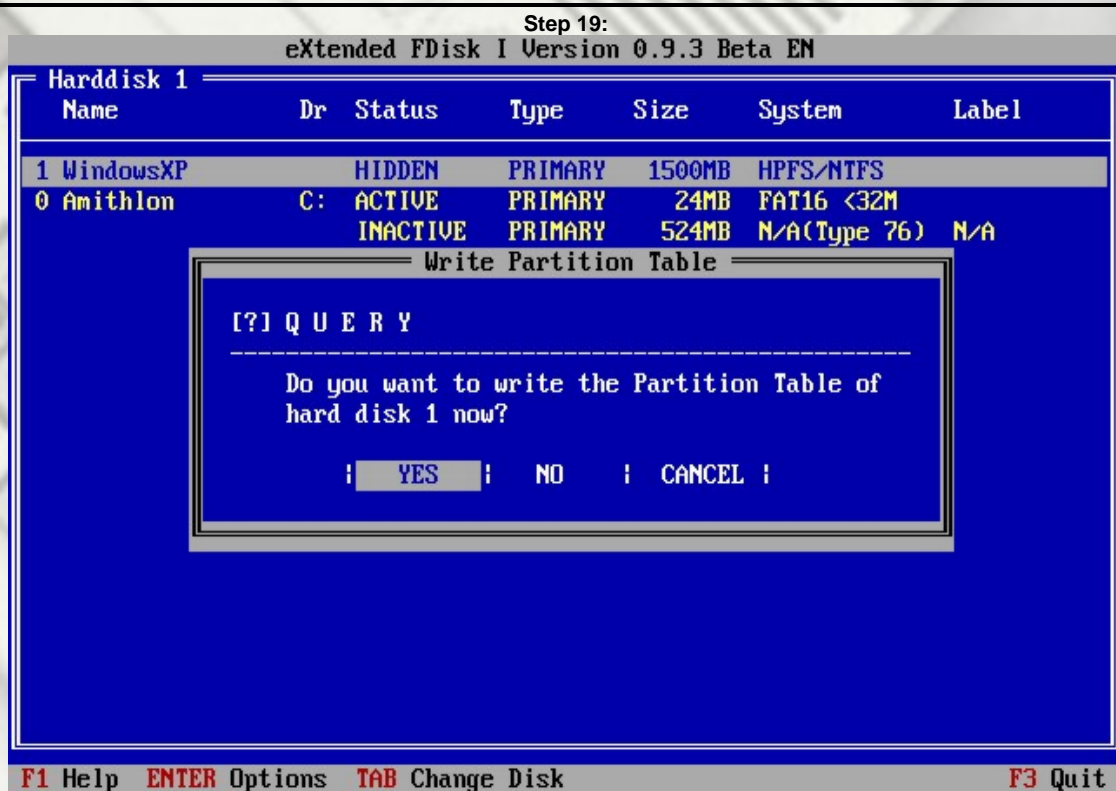
Create a new boot menu entry for Amithlon.



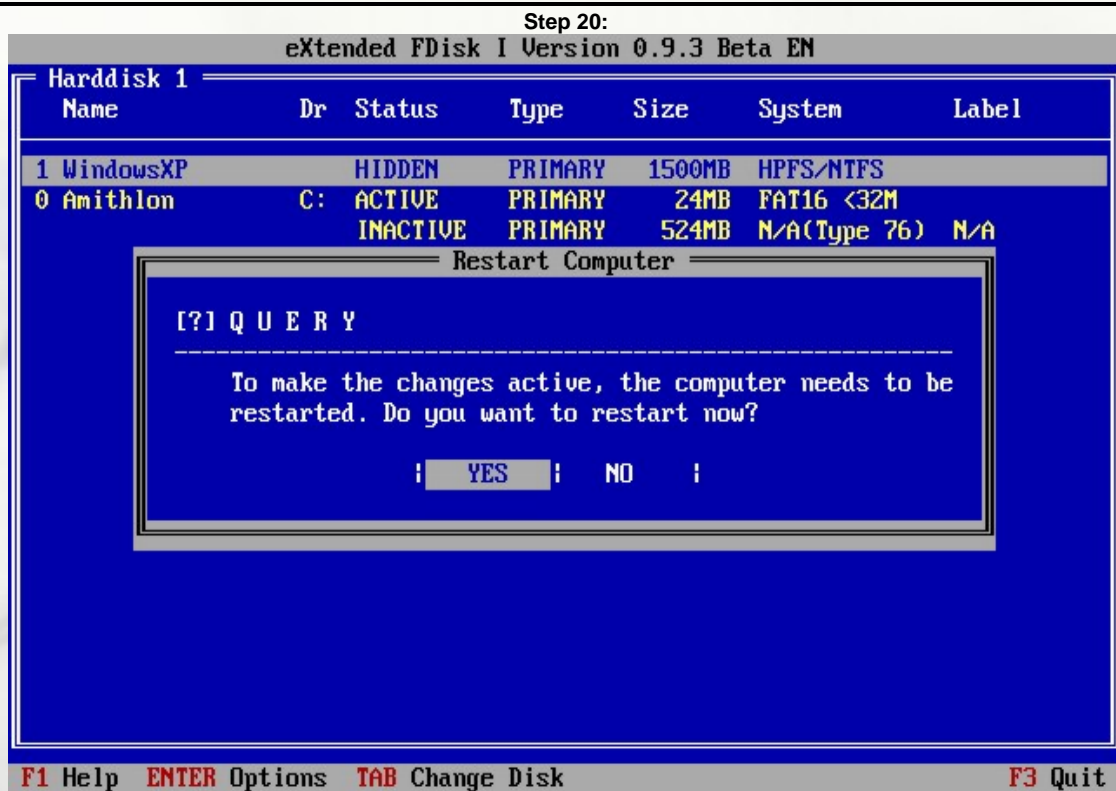
Select the WindowsXP partition and create a new boot menu entry.



Now the screen should look similar to this one ... depends on the physical size of your hard drive.
Leaving XFDISK you will be asked to write the boot manager .. select YES!



... write the partition table ...



... and restart the computer.

Step 21:

Starting FreeDOS ...

A:\>format c: /s

WARNING: ALL DATA ON NON-REMOVABLE DISK
DRIVE C: WILL BE LOST! PLEASE CONFIRM!

Proceed with format (YES/NO)? YES

Boot sector unreadable, disk not yet formatted

Disk size: 24 Mbytes, FAT16. ***

Cannot find existing format - not saving UNFORMAT data.

Please enter volume label (max. 11 chars):

Reboot from the DOSToolDisk (again...) and format the activated Amithlon (kernel) partition.

FORMAT C: /S ... you need the system files on this partition!

Step 22:

System transferred.

24,740,352 bytes total disk space (disk size)

24,674,304 bytes available on disk (free clusters)

2,048 bytes in each allocation unit.

12,048 allocation units on disk.

Volume Serial Number is

A:\>copy *.* c:

Overwrite 'c:KERNEL.SYS' (Yes/No/All/Quit) ? n

Overwrite 'c:COMMAND.COM' (Yes/No/All/Quit) ? n

FORMAT.EXE => c:FORMAT.EXE

SYS.COM => c:SYS.COM

EDIT.EXE => c:EDIT.EXE

EDIT.HLP => c:EDIT.HLP

EDIT.LSM => c:EDIT.LSM

LOADLIN.EXE => c:LOADLIN.EXE

XFDISK.EXE => c:XFDISK.EXE

XFDISK.INI => c:XFDISK.INI

AUTOEXEC.BAT => c:AUTOEXEC.BAT

A:\>edit c:autoexec.bat

Copy every file from the disk to the hard drive (COPY *.* C:).

**IF YOU WERE ASKED TO OVERWRITE THE KERNEL.SYS & COMMAND.COM
YOU MUST ANSWER WITH NO!!!**

After that you edit the autoexec.bat on the hard drive (EDIT C:AUTOEXEC.BAT).

Step 23:

```

FreeDos Edit Beta Version 0.4
File Edit Search Utilities Options Window Help
AUTOEXEC.BAT
echo OFF
cls
echo Starting Amithlon ...
loadlin @small
█

F1=Help | FreeDos EditLine: 4 Column: 0 Mode:INS 10:38pm

```

Write the batch file as shown in the example on the screen above ...
... and save the file.

Step 24:

```

A:\>dir c:
Volume in drive C has no label
Volume Serial Number is

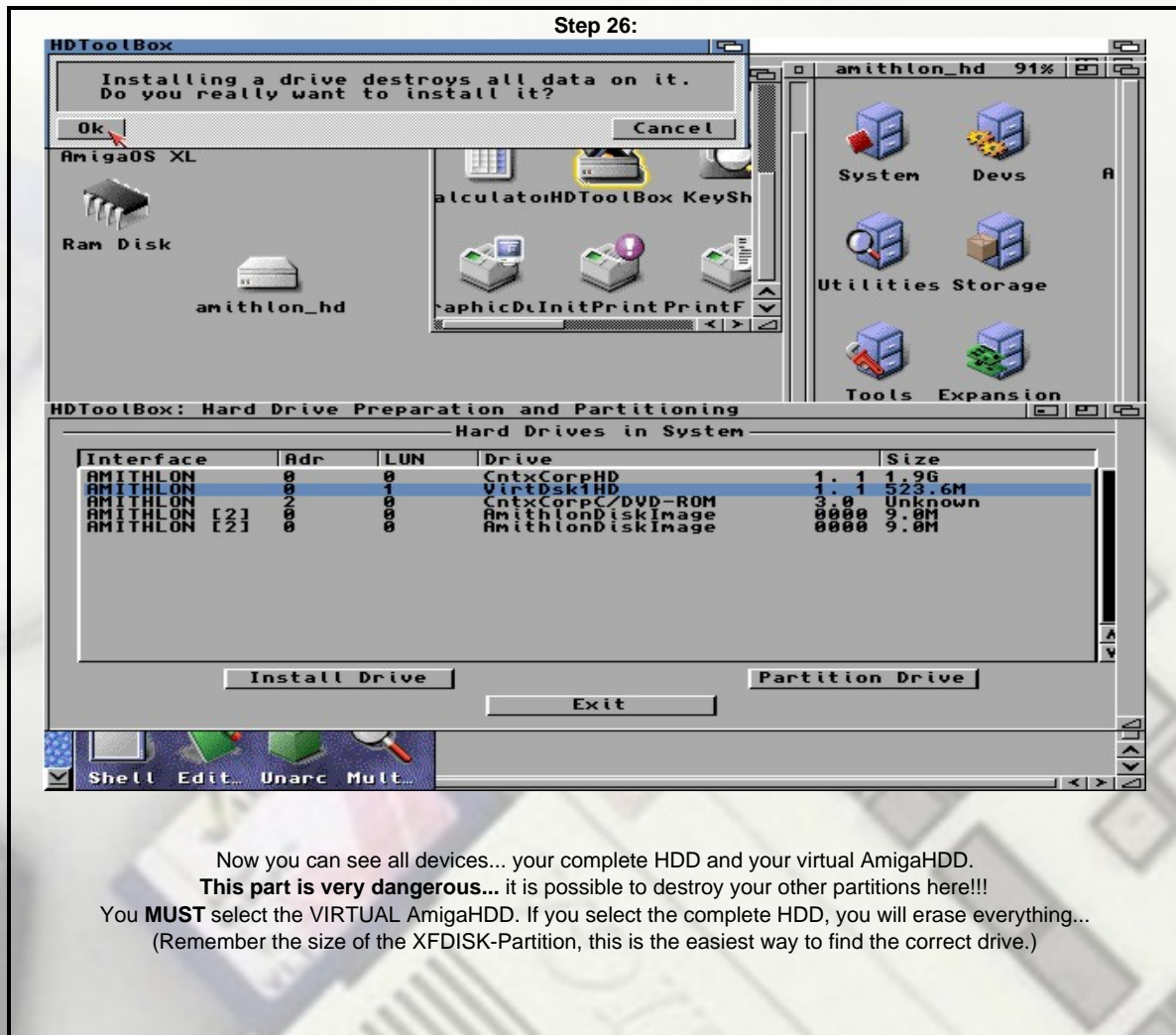
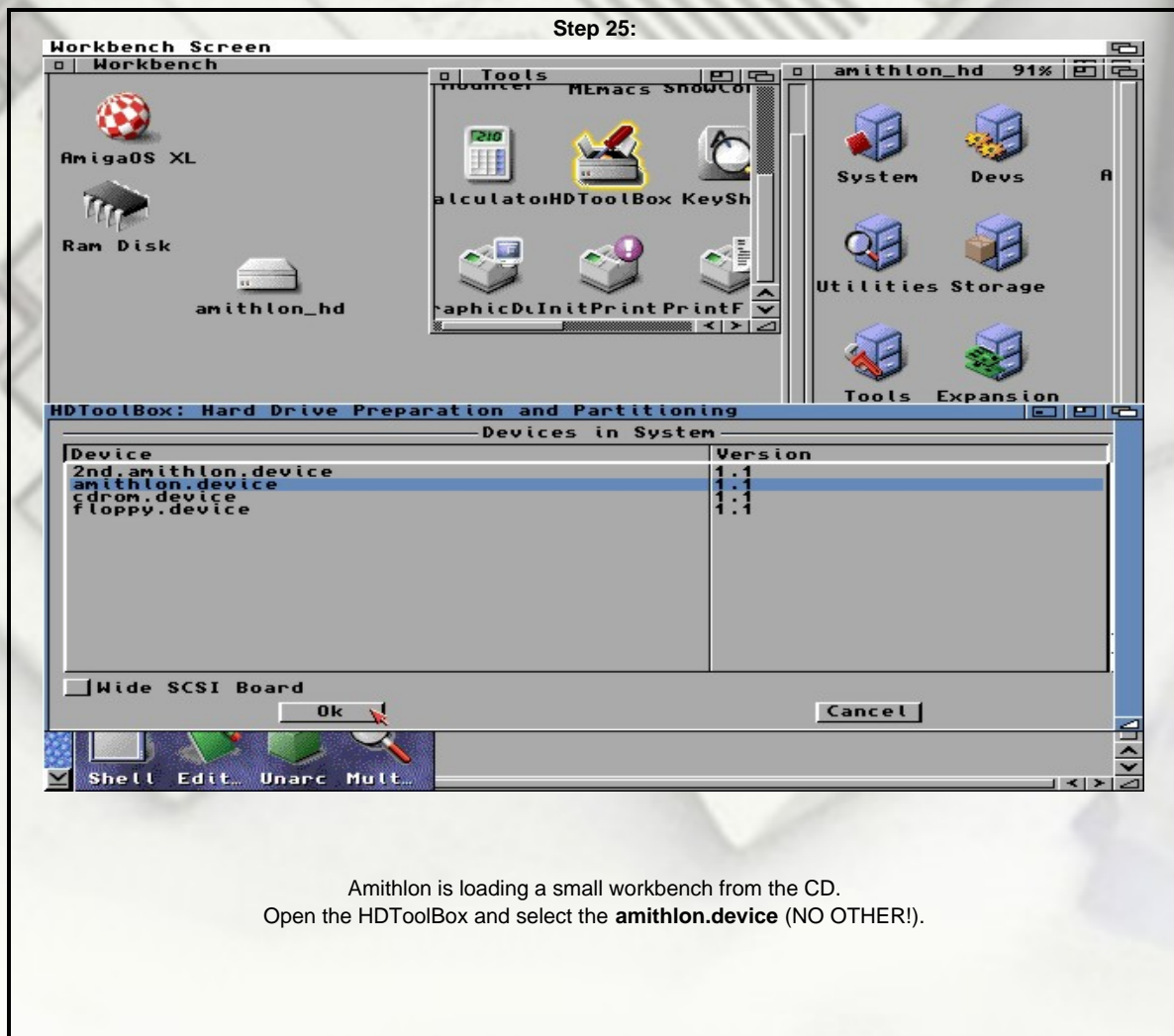
Directory of C:\

KERNEL  SYS      44,730  11-30-05  7:43p
COMMAND COM     66,357  11-15-05  3:30p
FORMAT  EXE     30,921  05-25-05  1:55a
SYS      COM     11,458  06-07-05  12:12a
EDIT     EXE    183,144  03-23-00  11:54a
EDIT     HLP     25,127  03-23-00  11:55a
EDIT     LSM       466  03-23-00  11:51a
LOADLIN  EXE    32,225  04-16-02  1:49a
XFDISK   EXE    86,413  09-09-01  10:06p
XFDISK   INI       203  10-27-00  12:33p
AUTOEXEC BAT        63  02-13-06  10:39p
SMALLIRD GZ    840,331  02-13-06  8:51p
SMALL    GZ       116  02-13-06  8:51p
EMUBOX   GZ    847,568  02-13-06  8:51p
14 file(s)      2,169,122 bytes
0 dir(s)       22,482,944 bytes free

A:\>

```

Now you will need the AMITHLON FILES!
Copy them to your hard drive, the needed files are:
SMALLIRD.GZ, SMALL, EMUBOX.GZ
(You can find them on your Amithlon-CD inside the directory isolinux).
The easiest way is to transfer them with floppy disks ...
(On Windows -> Drag&Drop & on DOS -> copy a:* c:).
The sizes can be different from this screenshot, depending on kernel updates and so on...
Now REBOOT (again) your system with the Amithlon-CD inside the CD-ROM.

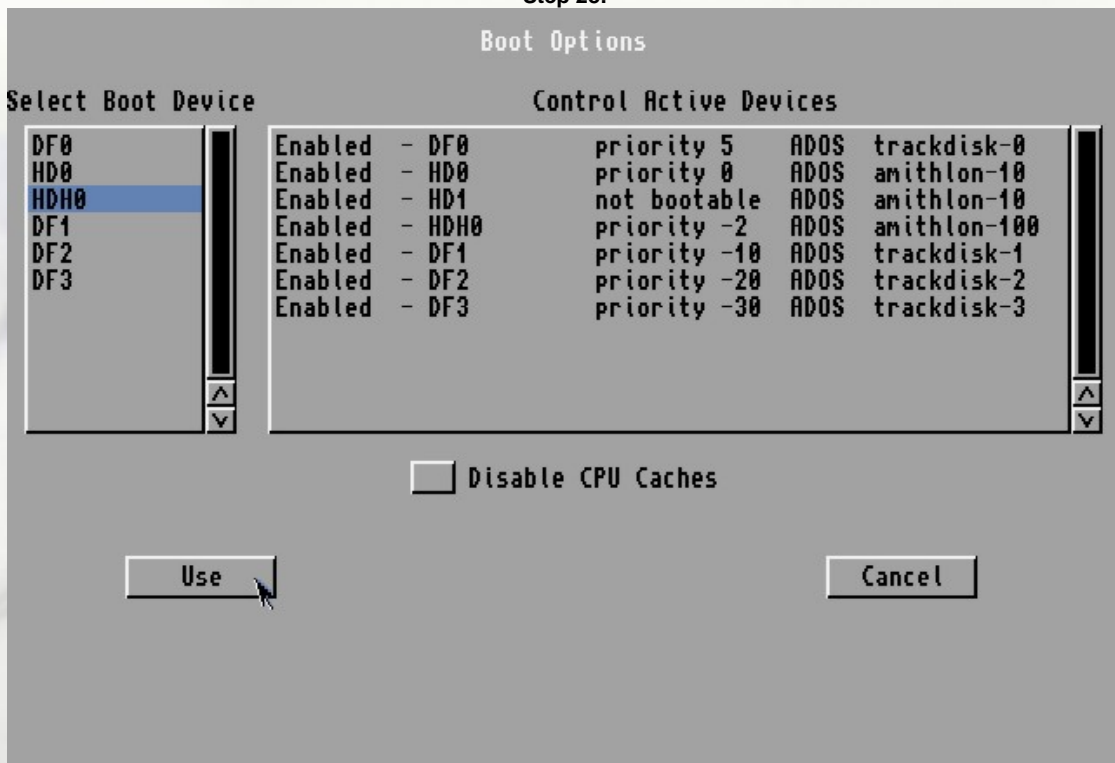


Step 27:

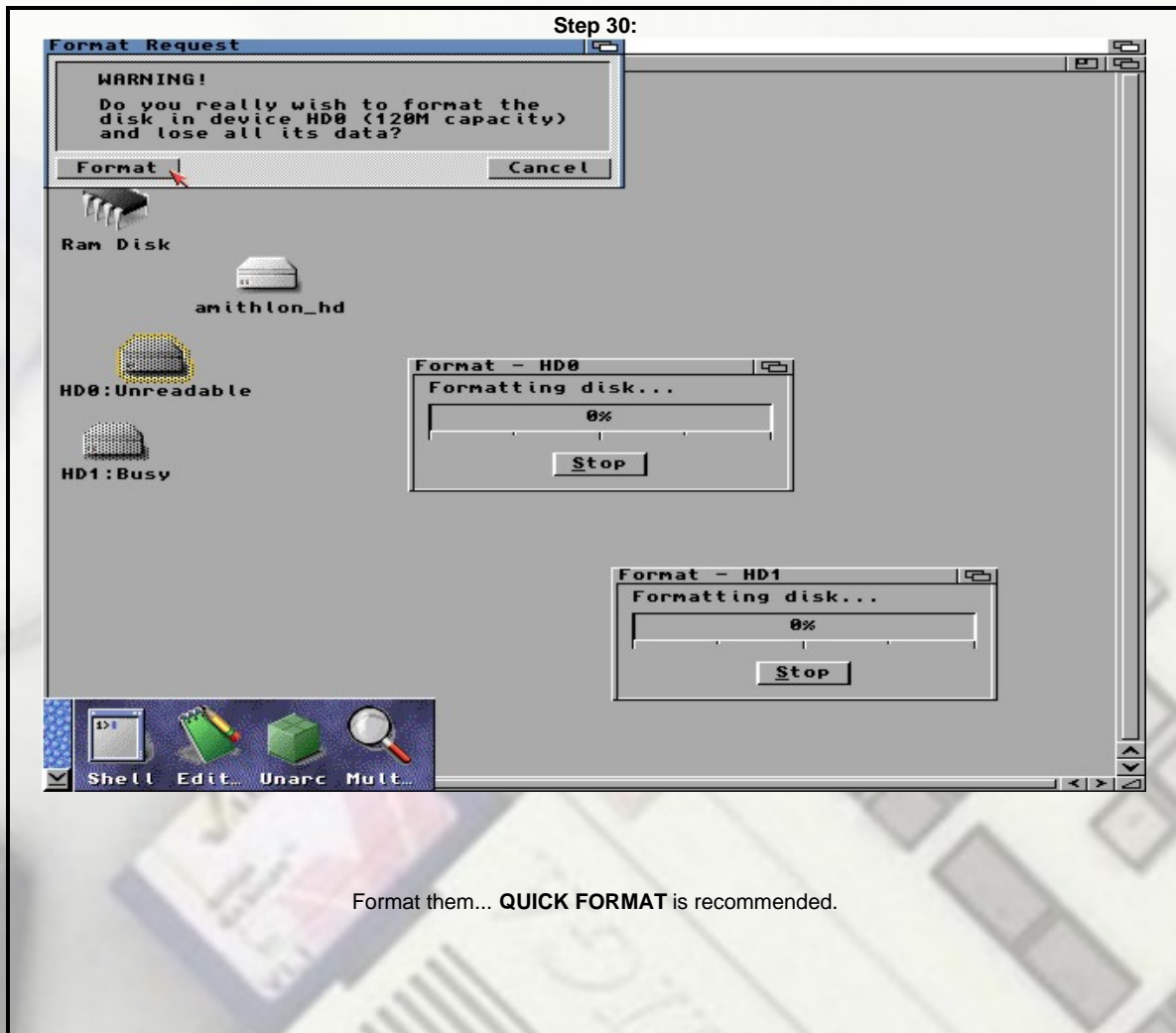
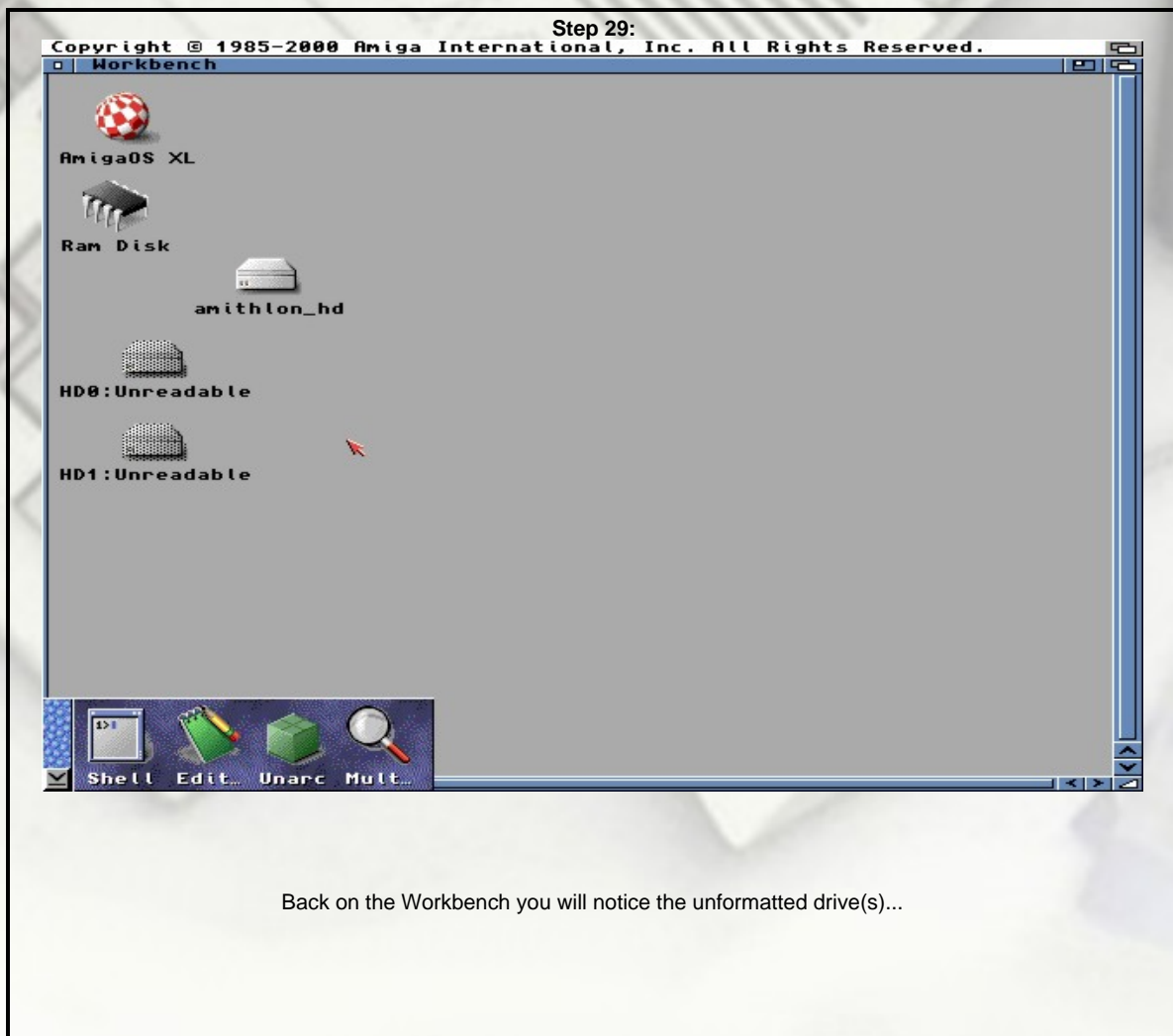


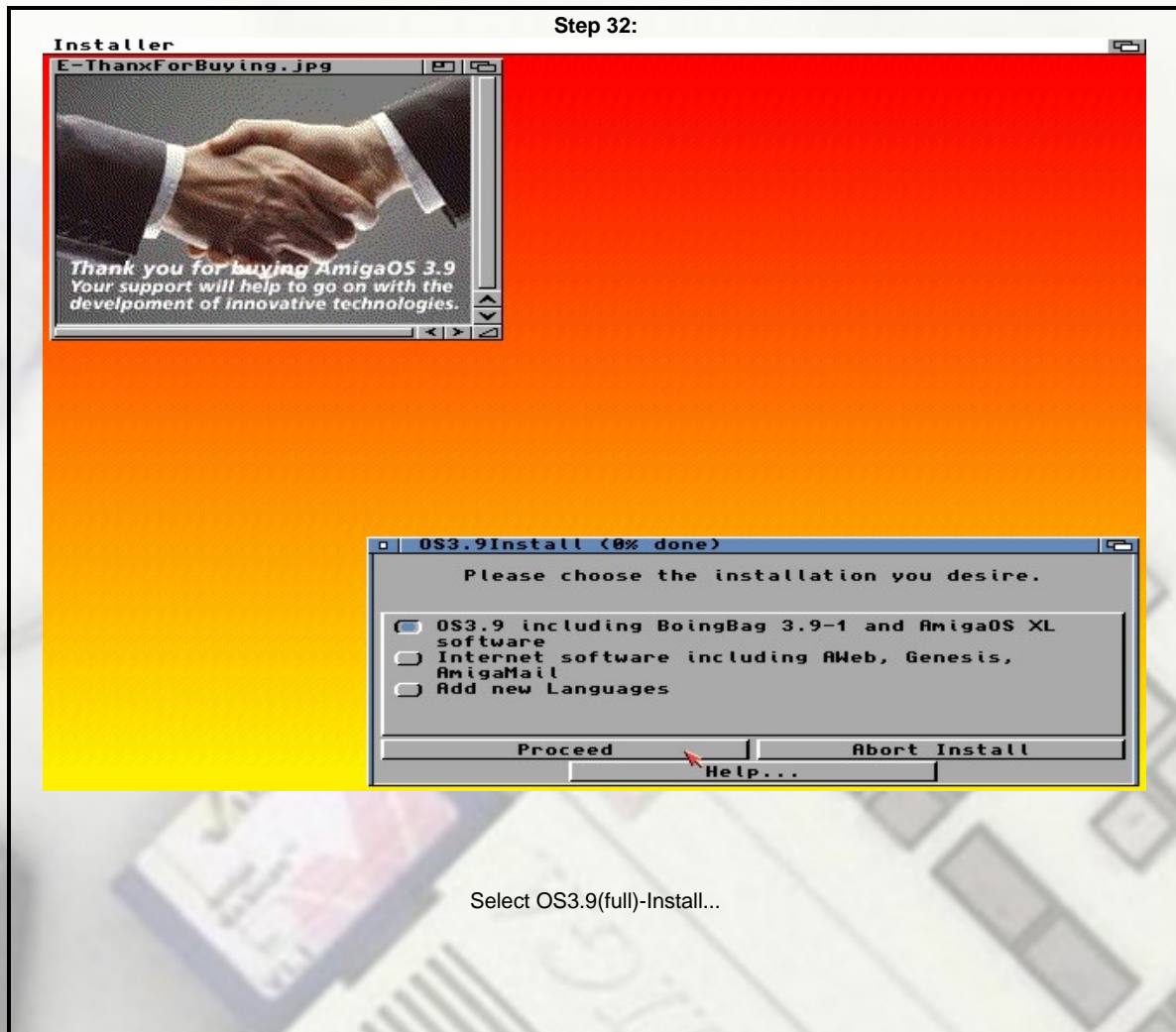
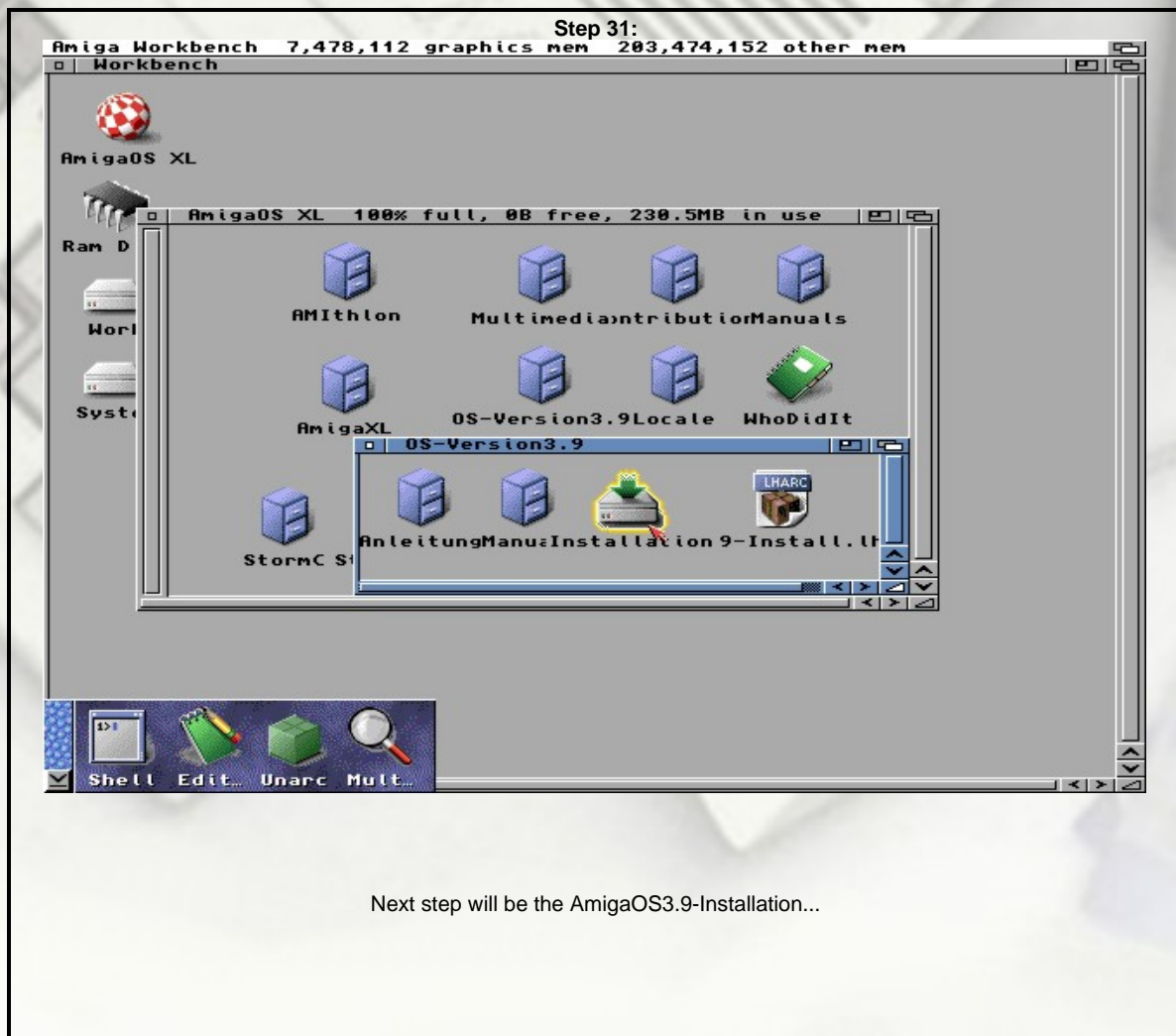
Inside the virtual AmigaHDD you configure the partition just like every normal AmigaHDD.
 Create a bootable system partition (**HD0**: do not forget the checkmark for bootable).
 It is up to you, if you need some other partitions like Work (HD1:), Tools, Music, GFX...
 Save your settings and your system will ask for a reboot.

Step 28:

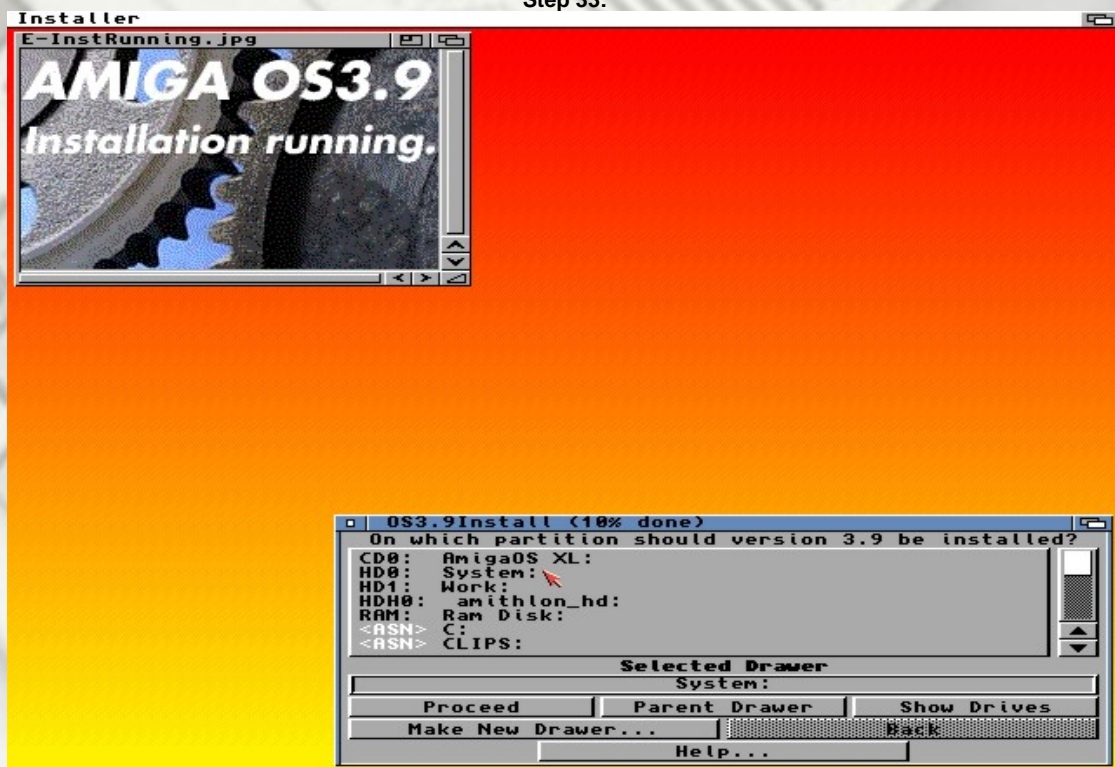


During the reset hold both mouse buttons to load the Amiga boot menu.
 (If not, your Amiga wants to boot up with the unformatted HD0: - NoDOS Disk-Error appears!)
 Select the **HDH0**: (Amithlon-CD) or **ED0**: (Emergency-CD) device as boot device.
 Click on use...





Step 33:



Target is our "new" HD0:
If you have done everything right, you can remove the Amithlon-CD
after the installation of AmigaOS and restart the PC.

Step 34:



Inside the XFDISK boot menu you can select Amithlon or WindowsXP.
If you select Amithlon...



powered by







Special thanks to Harry and Jeff.

Microsoft Windows is a registered trademark of Microsoft Corporation.
 AMIGA and AMIGA logo are registered trademarks of AMIGA Inc.,
 AMlthlon is genuine HAAGE & PARTNER software.
 FreeDOS is a trademark of Jim Hall.
 Edit V0.4 by Shaun Raven.
 LOADLIN v1.6c by Hans Lermen.
 XFDISK by Florian Painke and Ulrich Mueller.
 RAWRITE by Mark Becker.